

Recombinant Human NSG1 Protein, GST-tagged

Cat. No. NSG1-2310H Lot. No. (See product label)

SPECIFICATION

Product Overview	Human D4S234E full-length ORF (AAH01745, 1 a.a. - 185 a.a.) recombinant protein with GST-tag at N-terminal.
Species	Human
Source	Wheat Germ
Description	NSG1 (Neuron Specific Gene Family Member 1) is a Protein Coding gene. GO annotations related to this gene include clathrin light chain binding. An important paralog of this gene is HMP19.
Molecular Mass	46.09 kDa
AA Sequence	MVKLGNNFAEKGTKQPLLEDGFDTIPLMTPLDVNQLQFPPDPKVVVKTKEYEPDRK K GKARPPQIAEFTVSITGVTERFKVSVLVLFALAF LTCVVFLVVYKVYKYDRACPDG FVLKNTQCIPEGLESYYAEQDSSAREKFYTVINHYNLAKQSITRSVSPWMSVLSEEKL SEQETEAAEKSA
Applications	Enzyme-linked Immunoabsorbent Assay Western Blot (Recombinant protein) Antibody Production Protein Array
Notes	Best use within three months from the date of receipt of this protein.

 Tel: 1-631-559-9269 1-516-512-3133

 Email: info@creative-biomart.com  Fax: 1-631-938-8127

 45-1 Ramsey Road, Shirley, NY 11967, USA

Storage Store at -80 centigrade. Aliquot to avoid repeated freezing and thawing.

Storage Buffer 50 mM Tris-HCl, 10 mM reduced Glutathione, pH=8.0 in the elution buffer.

GENE INFORMATION

Gene Name NSG1 neuronal vesicle trafficking associated 1 [Homo sapiens (human)]

Official Symbol NSG1

Synonyms

NSG1; neuronal vesicle trafficking associated 1; D4S234E; DNA segment on chromosome 4 (unique) 234 expressed sequence; neuron-specific protein family member 1; brain neuron cytoplasmic protein 1; carboxyterminally EE-tagged neuron-enriched endosomal 21 kDa protein; P21; NSG1; D4S234; NEEP21;

Gene ID 27065

mRNA Refseq NM_001040101

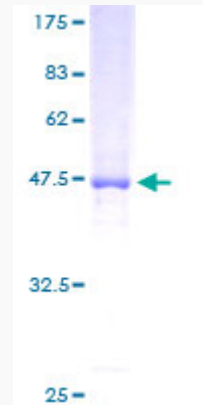
Protein Refseq NP_001035190

MIM 607645

 Tel: 1-631-559-9269 1-516-512-3133

 Email: info@creative-biomart.com  Fax: 1-631-938-8127

 45-1 Ramsey Road, Shirley, NY 11967, USA



Quality Control

Testing:

12.5% SDS-PAGE Stained with Coomassie Blue.

 Tel: 1-631-559-9269 1-516-512-3133

 Email: info@creative-biomart.com  Fax: 1-631-938-8127

 45-1 Ramsey Road, Shirley, NY 11967, USA