

## Recombinant Human NT5E protein, hFc-tagged

Cat. No. NT5E-580H Lot. No. (See product label)

### SPECIFICATION

<b>Product Overview</b>	Recombinant Human NT5E protein(P21589-1)(Trp27-Lys547), fused with C-terminal hFc tag, was expressed in HEK293.
<b>Species</b>	Human
<b>Source</b>	HEK293
<b>ProteinLength</b>	Trp27-Lys547
<b>Tag</b>	C-hFc
<b>Form</b>	Lyophilized from 0.22µm filtered solution in 20mM Tris, 120mM NaCl (pH 7.5). Normally 8% trehalose is added as protectant before lyophilization.
<b>Bio-activity</b>	Immobilized Human CD73, hFc Tag at 2µg/ml (100µl/well) on the plate. Dose response curve for Biotinylated Anti-CD73 Antibody, hFc Tag with the EC50 of 35.3ng/ml determined by ELISA.
<b>Molecular Mass</b>	The protein has a predicted MW of 84.5 kDa. Due to glycosylation, the protein migrates to 85-100 kDa based on Tris-Bis PAGE result.
<b>Endotoxin</b>	Less than 1EU per µg by the LAL method.
<b>Purity</b>	> 95% as determined by Tris-Bis PAGE; > 95% as determined by HPLC

 Tel: 1-631-559-9269 1-516-512-3133

 Email: [info@creative-biomart.com](mailto:info@creative-biomart.com)  Fax: 1-631-938-8127

 45-1 Ramsey Road, Shirley, NY 11967, USA

**Storage** Reconstituted protein stable at -80°C for 12 months, 4°C for 1 week. Use a manual defrost freezer and avoid repeated freeze-thaw cycles.

**Reconstitution** Centrifuge tubes before opening. Reconstituting to a concentration more than 100 µg/ml is recommended. Dissolve the lyophilized protein in distilled water.

## GENE INFORMATION

**Gene Name** [NT5E 5-nucleotidase, ecto \(CD73\) \[ Homo sapiens \]](#)

**Official Symbol** [NT5E](#)

**Synonyms** NT5E; 5-nucleotidase, ecto (CD73); 5 nucleotidase (CD73) , NT5; 5-nucleotidase; CD73; eN; eNT; 5-NT; ecto-5-nucleotidase; Purine 5-Prime-Nucleotidase; NT; NT5; NTE; E5NT;

**Gene ID** [4907](#)

**mRNA Refseq** [NM\\_001204813](#)

**Protein Refseq** [NP\\_001191742](#)

**MIM** [129190](#)

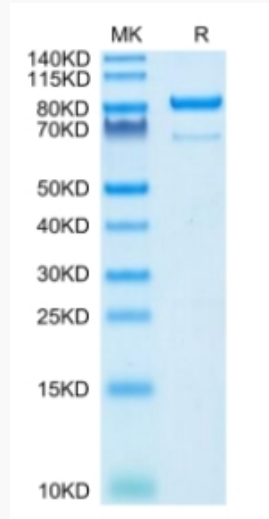
**UniProt ID** [P21589](#)

 Tel: 1-631-559-9269 1-516-512-3133

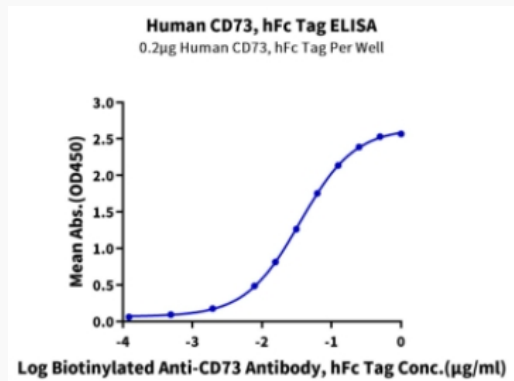
 Email: [info@creative-biomart.com](mailto:info@creative-biomart.com)  Fax: 1-631-938-8127

 45-1 Ramsey Road, Shirley, NY 11967, USA

**Tris-Bis PAGE**



**ELISA Data**



 Tel: 1-631-559-9269 1-516-512-3133

 Email: [info@creative-biomart.com](mailto:info@creative-biomart.com)  Fax: 1-631-938-8127

 45-1 Ramsey Road, Shirley, NY 11967, USA