

## Recombinant Human NTF4 protein

Cat. No. NTF4-16H Lot. No. (See product label)

### SPECIFICATION

|                         |  |
|-------------------------|--|
| <b>Product Overview</b> | Recombinant Human NTF4 protein was expressed in Escherichia coli.  |
| <b>Species</b>          | Human  |
| <b>Source</b>           | E.coli   |
| <b>ProteinLength</b>    | 131  |
| <b>Description</b>      | <p>NT-4 also named as NT-5 is a neuronal and epithelial grow factor belongs to the NGF-beta family. The NT-4 precursor is consisted of a 24 a.a. signal peptide, a 56 a.a. propertied and 130 a.a. NT-4. The mature protein has six Cys amino acid residues and has the relative structure with NT-3, BDNF (sharing about 48 % - 52 % sequence identity). Additionally, it shares 91 % and 95 % a.a. sequence identity with mouse and rat NT-4. NT-4 is mainly expressed in prostate and has low level thymus, placenta, and skeletal muscle. It can binding with the LNGFR and trkB receptors and plays a crucial role in the regulation of survival and the maintenance of peripheral sensory sympathetic neurons. Defect of NT-4 may cause primary open angle glaucoma type 1O.</p> |
| <b>Form</b>             | Lyophilized from a 0.2µm filtered concentrated solution in PBS, pH 5.5.  |
| <b>Bio-activity</b>     | Fully biologically active when compared to standard. The ED50 as determined by the dose-dependent induction of choline acetyl transferase activity in rat basal forebrain primary septal cell cultures is less than 50 ng/ml, corresponding to a specific activity of > 2.0 ×  |

 Tel: 1-631-559-9269 1-516-512-3133

 Email: [info@creative-biomart.com](mailto:info@creative-biomart.com)  Fax: 1-631-938-8127

 45-1 Ramsey Road, Shirley, NY 11967, USA

|                       |   |
|-----------------------|---|
|                       | 10 <sup>4</sup> IU/mg.  |
| <b>Molecular Mass</b> | Approximately 28.1 kDa, a noncovalently linked homodimer of two 14.0 kDa polypeptide monomers (262 total amino acid residues).  |
| <b>AA Sequence</b>    | MGVSETAPASRRGELAVCDVSGVWTDTRRTAVDLRGREVEVLGEVPAAGGSPLRQ<br>YFFETRCKADNAEEGGPGAGGGGCRGVDRRHVVSECKAKQSYVRALTADAQGRV<br>GWRWIRIDTACVCTLLSRTGRA   |
| <b>Endotoxin</b>      | Less than 1 EU/μg of rHuNT-4 as determined by LAL method.   |
| <b>Purity</b>         | >97% by SDS-PAGE and HPLC analysis.   |
| <b>Storage</b>        | Use a manual defrost freezer and avoid repeated freeze-thaw cycles. 12 months from date of receipt, -20 to -70 centigrade as supplied. 1 month, 2 to 8 centigrade under sterile conditions after reconstitution. 3 months, -20 to -70 centigrade under sterile conditions after reconstitution.   |
| <b>Reconstitution</b> | We recommend that this vial be briefly centrifuged prior to opening to bring the contents to the bottom. Reconstitute in sterile distilled water or aqueous buffer containing 0.1 % BSA to a concentration of 0.1-1.0 mg/mL. Stock solutions should be apportioned into working aliquots and stored at ≤-20 centigrade. Further dilutions should be made in appropriate buffered solutions. |

## GENE INFORMATION

|                        |   |
|------------------------|---|
| <b>Gene Name</b>       | NTF4  |
| <b>Official Symbol</b> | NTF4  |
| <b>Synonyms</b>        | NTF4; neurotrophin 4; neurotrophin 5 (neurotrophin 4/5) , NTF5; neurotrophin-4; |

 Tel: 1-631-559-9269 1-516-512-3133

 Email: [info@creative-biomart.com](mailto:info@creative-biomart.com)  Fax: 1-631-938-8127

 45-1 Ramsey Road, Shirley, NY 11967, USA

GLC10; neurotrophic factor 4; NT 4/5; neurotrophin-5; neurotrophic factor 4; neurotrophic factor 5; neurotrophin 5 (neurotrophin 4/5); NT4; NT5; NT-4; NT-5; NTF5; GLC10; NT-4/5;

**Gene ID** 4909

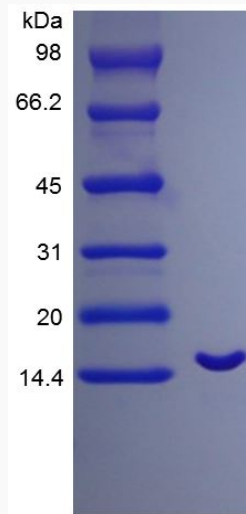
**mRNA Refseq** NM\_006179

**Protein Refseq** NP\_006170

**MIM** 162662

**UniProt ID** P34130

**SDS-PAGE of NTF4-16H**



 Tel: 1-631-559-9269 1-516-512-3133

 Email: [info@creative-biomart.com](mailto:info@creative-biomart.com)  Fax: 1-631-938-8127

 45-1 Ramsey Road, Shirley, NY 11967, USA