

Recombinant Human NTHL1 Protein, Myc/DDK-tagged, C13 and N15-labeled

Cat. No. NTHL1-1982H **Lot. No.** (See product label)

SPECIFICATION

Product Overview	NTHL1 MS Standard C13 and N15-labeled recombinant protein (NP_002519) with a C-terminal MYC/DDK tag, was expressed in HEK293 cells.
Species	Human
Source	HEK293
Description	The protein encoded by this gene is a DNA N-glycosylase of the endonuclease III family. Like a similar protein in <i>E. coli</i> , the encoded protein has DNA glycosylase activity on DNA substrates containing oxidized pyrimidine residues and has apurinic/apyrimidinic lyase activity.
Molecular Mass	34.2 kDa
AA Sequence	<p>MCSPQESGMTALSARMLTRSRLGPGAGPRGCREEPGPLRRREAAAEEARKSHSP VKRPRKAQRLRVAYEGSDSEKGEAEPLKVPVWEPQDWQQQLVNIRAMRNKKDA PVDHLGTEHCYDSSAPPKVRRYQVLLSLMLSSQTKDQVTAGAMQRLRARGLTVDSI LQTTDATLGKLIYPVGFWRSKVKYIKQTSAILQQHYGGDIPASVAELVALPGVGPKM AHLAMAVAWGTVSGIAVDTHVHRIANRLRWTKKATKSPEETRAALEEWLPRELWHE INGLLVGFQQTCLP VHPRCHA CLN QALCPAAQGLTRTRPLEQKLISEEDLAANDILD YKDDDDKV</p>
Purity	> 80% as determined by SDS-PAGE and Coomassie blue staining

 Tel: 1-631-559-9269 1-516-512-3133

 Email: info@creative-biomart.com  Fax: 1-631-938-8127

 45-1 Ramsey Road, Shirley, NY 11967, USA

Stability	Stable for 3 months from receipt of products under proper storage and handling conditions.
Storage	Store at -80 centigrade. Avoid repeated freeze-thaw cycles.
Concentration	50 µg/mL as determined by BCA
Storage Buffer	100 mM glycine, 25 mM Tris-HCl, pH 7.3.

GENE INFORMATION

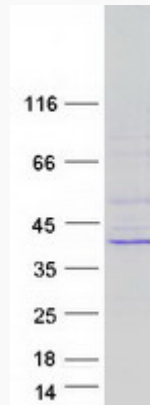
Gene Name	NTHL1 nth like DNA glycosylase 1 [Homo sapiens (human)]
Official Symbol	NTHL1
Synonyms	NTHL1; nth endonuclease III-like 1 (E. coli); nth (E.coli endonuclease III) like 1; endonuclease III-like protein 1; NTH1; OCTS3;
Gene ID	4913
mRNA Refseq	NM_002528
Protein Refseq	NP_002519
MIM	602656
UniProt ID	P78549

 Tel: 1-631-559-9269 1-516-512-3133

 Email: info@creative-biomart.com  Fax: 1-631-938-8127

 45-1 Ramsey Road, Shirley, NY 11967, USA

SDS-PAGE



 Tel: 1-631-559-9269 1-516-512-3133

 Email: info@creative-biomart.com  Fax: 1-631-938-8127

 45-1 Ramsey Road, Shirley, NY 11967, USA