

# Recombinant Full Length Human NTRK1 Protein, C-Flag-tagged

**Cat. No.** NTRK1-1505HFL    **Lot. No.** (See product label)

## SPECIFICATION

<b>Product Overview</b>	Recombinant Full Length Human NTRK1 Protein, fused to Flag-tag at C-terminus, was expressed in Mammalian cells.
<b>Species</b>	Human
<b>Source</b>	Mammalian Cells
<b>Description</b>	This gene encodes a member of the neurotrophic tyrosine kinase receptor (NTRK) family. This kinase is a membrane-bound receptor that, upon neurotrophin binding, phosphorylates itself and members of the MAPK pathway. The presence of this kinase leads to cell differentiation and may play a role in specifying sensory neuron subtypes. Mutations in this gene have been associated with congenital insensitivity to pain, anhidrosis, self-mutilating behavior, cognitive disability and cancer. Alternate transcriptional splice variants of this gene have been found, but only three have been characterized to date.
<b>Form</b>	25 mM Tris HCl, pH 7.3, 100 mM glycine, 10% glycerol.
<b>Molecular Mass</b>	86.7 kDa
<b>AA Sequence</b>	MLRGGRRGQLGWHSWAAGPGSLLAWLILASAGAAPCPDACCPHGSSGLRCTRDG ALDSLHHLPGAENLTE LYIENQQHLQHLELRDLRGLGELRNLTIVKSGLRVAPDAF HFTPRLSRLNLSFNALSLSWKTVQGLSL QELVLSGNPLHCSCALRWLQRWEEEG LGGVPEQKLQCHGQGPLAHMPNASCGVPTLKVQVPNASVDVGDD VLLRCQVEGR

 Tel: 1-631-559-9269    1-516-512-3133

 Email: [info@creative-biomart.com](mailto:info@creative-biomart.com)     Fax: 1-631-938-8127

 45-1 Ramsey Road, Shirley, NY 11967, USA

GLEQAGWILTELEQSATVMKSGGLPSLGLTLANVTSDLNRKNLTCWAENDVGRAEV  
 SVQV NVSFPASVQLHTAVEMHHWCIPFSVDGQPAPSLRWLFGNSVLNETSFIFTEF  
 LEPAANETVRHGCLRLNQ PTHVNNGNYTLAANPFGQASASIMAAFMDNPFEFNPE  
 DPIPDTNSTSGDPVEKKDETPFGVSVAVGLAV FACLFLSTLLLVLNKCGRRNKFGIN  
 RPAVLAPEDGLAMSLHFMTLGGSSLSPTTEGKGSGLQGHIENPQY FSDACVHHIKR  
 RDIVLKWELGEGAFGKVFLAECHNLLPEQDKMLVAVKALKEASESARQDFQREAE  
 LTM LQHQHIVRFFGVCTEGRPLLMVFEYMRHGDLNRFLRSHGPDAKLLAGGEDVA  
 PGPLGLGQLLAVASQVAA GMVYLAGLHFVHRDLATRNCLVGGQLVVKIGDFGMSR  
 DIYSTDYYRVGGRTMLPIRWMPPEVYAIMRGCWQREPQQRHSIKD  
 QLSNTEAIDCITQGRELERPRACPPEVYAIMRGCWQREPQQRHSIKD  
 VHARLQALAQAPPVYLDVLGTRTRPLEQKLISEEDLAANDILDYKDDDDKV

**Purity** > 80% as determined by SDS-PAGE and Coomassie blue staining.

**Stability** Stable for 12 months from the date of receipt of the product under proper storage and handling conditions. Avoid repeated freeze-thaw cycles.

**Storage** Store at -80 centigrade.

**Concentration** >50 ug/mL as determined by microplate BCA method.

**Preparation** Recombinant protein was captured through anti-DDK affinity column followed by conventional chromatography steps.

**Protein Families** Druggable Genome, Protein Kinase, Transmembrane

**Protein Pathways** Apoptosis, Endocytosis, MAPK signaling pathway, Neurotrophin signaling pathway, Pathways in cancer, Thyroid cancer

**Full Length** Full L.

 Tel: 1-631-559-9269 1-516-512-3133

 Email: [info@creative-biomart.com](mailto:info@creative-biomart.com)  Fax: 1-631-938-8127

 45-1 Ramsey Road, Shirley, NY 11967, USA

## GENE INFORMATION

**Gene Name** NTRK1 neurotrophic receptor tyrosine kinase 1 [ Homo sapiens (human) ]

**Official Symbol** NTRK1

**Synonyms** MTC; TRK; TRK1; TRKA; Trk-A; p140-TrkA

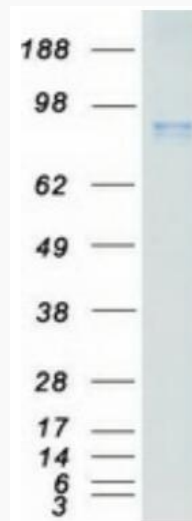
**Gene ID** 4914

**mRNA Refseq** NM\_001012331.2

**Protein Refseq** NP\_001012331.1

**MIM** 191315

**UniProt ID** P04629



 Tel: 1-631-559-9269 1-516-512-3133

 Email: [info@creative-biomart.com](mailto:info@creative-biomart.com)  Fax: 1-631-938-8127

 45-1 Ramsey Road, Shirley, NY 11967, USA



Coomassie blue staining of purified NTRK1 protein.

 Tel: 1-631-559-9269 1-516-512-3133

 Email: [info@creative-biomart.com](mailto:info@creative-biomart.com)  Fax: 1-631-938-8127

 45-1 Ramsey Road, Shirley, NY 11967, USA