

Active Recombinant Human NTRK1 Protein, His tagged

Cat. No. NTRK1-495H Lot. No. (See product label)

SPECIFICATION

Product Overview	Active Recombinant Human NTRK1 Protein (Ala33-Gly417) with His tag at C-term was expressed in HEK293.
Species	Human
Source	HEK293
ProteinLength	33-417 aa
Description	TrkA, a tyrosine kinase receptor, is an essential component of the nerve growth factor (NGF) response pathway. The binding of NGF to the receptor induces receptor autophosphorylation and activation of intracellular signaling pathways, resulting in diverse biological effects.
Form	Lyophilized from 0.22µm filtered solution in PBS (pH 7.4).
Bio-activity	Measured by its binding ability in a functional ELISA. Test result was comparable to standard batch.
Endotoxin	< 1 EU/µg by LAL
Purity	> 95 % as determined by BisTris PAGE.
Storage	Upon receiving, the product remains stable for 6 months at -20 centigrade or below. Upon reconstitution, the product should be stable for 3 months at -80 centigrade.

 Tel: 1-631-559-9269 1-516-512-3133

 Email: info@creative-biomart.com  Fax: 1-631-938-8127

 45-1 Ramsey Road, Shirley, NY 11967, USA

Avoid repeated freeze-thaw cycles.

Reconstitution

Centrifuge the tube before opening. Reconstituting to a concentration more than 100 µg/mL is recommended. Dissolve the lyophilized protein in distilled water.

GENE INFORMATION

Gene Name [NTRK1 neurotrophic tyrosine kinase, receptor, type 1 \[Homo sapiens \(human\) \]](#)

Official Symbol [NTRK1](#)

Synonyms

NTRK1; neurotrophic tyrosine kinase, receptor, type 1; high affinity nerve growth factor receptor; MTC; TRK; TRKA; gp140trk; Oncogene TRK; tyrosine kinase receptor A; tropomyosin-related kinase A; TRK1-transforming tyrosine kinase protein; TRK1; Trk-A; p140-TrkA; DKFZp781114186

Gene ID [4914](#)

mRNA Refseq [NM_001007792](#)

Protein Refseq [NP_001007793](#)

MIM [191315](#)

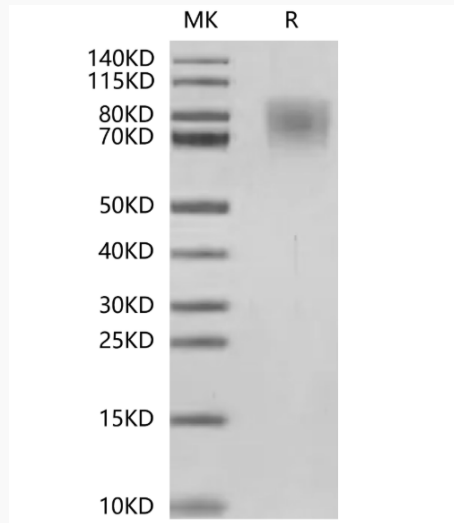
UniProt ID [P04629](#)

 Tel: 1-631-559-9269 1-516-512-3133

 Email: info@creative-biomart.com  Fax: 1-631-938-8127

 45-1 Ramsey Road, Shirley, NY 11967, USA

SDS-PAGE



 Tel: 1-631-559-9269 1-516-512-3133

 Email: info@creative-biomart.com  Fax: 1-631-938-8127

 45-1 Ramsey Road, Shirley, NY 11967, USA