

## Recombinant Human NTRK1 protein, His-tagged

Cat. No. NTRK1-973H Lot. No. (See product label)

### SPECIFICATION

<b>Product Overview</b>	Recombinant Human NTRK1 protein(Pro 285-Glu 413)(NP_002520.2), corresponding to the Ig-like C2-type 2 domain, was expressed and purified in E. coli, with a N-terminal polyhistidine tag.
<b>Species</b>	Human
<b>Source</b>	E. coli
<b>ProteinLength</b>	285-413 aa
<b>Form</b>	Lyophilized from sterile 50mM Tirs, 200mM NaCl, pH 8.0.
<b>Molecular Mass</b>	The recombinant human NTRK1 Ig-like C2-type 2 domain (aa 285-413) consists of 136 amino acids and has a predicted molecular mass of 15.1 kDa. It migrates as an approximately 16 kDa band in SDS-PAGE under reducing conditions.
<b>Purity</b>	> 97 % as determined by SDS-PAGE
<b>Storage</b>	Store it under sterile conditions at -20°C to -80°C upon receiving. Recommend to aliquot the protein into smaller quantities for optimal storage. Avoid repeated freeze-thaw cycles.
<b>Reconstitution</b>	It is recommended that sterile water be added to the vial to prepare a stock solution of 0.2 ug/ul. Centrifuge the vial at 4°C before opening to recover the entire contents.

 Tel: 1-631-559-9269 1-516-512-3133

 Email: [info@creative-biomart.com](mailto:info@creative-biomart.com)  Fax: 1-631-938-8127

 45-1 Ramsey Road, Shirley, NY 11967, USA

**protein Refseq-Weblink** [http://www.ncbi.nlm.nih.gov/protein/NP\\_001007793.1](http://www.ncbi.nlm.nih.gov/protein/NP_001007793.1)

**Unit ID** P04629

**Unit ID-Weblink** <https://www.uniprot.org/uniprotkb/P04629>

## GENE INFORMATION

**Gene Name** [NTRK1 neurotrophic tyrosine kinase, receptor, type 1 \[ Homo sapiens \]](#)

**Official Symbol** [NTRK1](#)

**Synonyms** NTRK1; neurotrophic tyrosine kinase, receptor, type 1; high affinity nerve growth factor receptor; MTC; TRK; TRKA; gp140trk; Oncogene TRK; tyrosine kinase receptor A; tropomyosin-related kinase A; TRK1-transforming tyrosine kinase protein; TRK1; Trk-A; p140-TrkA; DKFZp781114186;

**Gene ID** [4914](#)

**mRNA Refseq** [NM\\_001007792](#)

**protein Refseq** [NP\\_001007793](#)

**MIM** [191315](#)

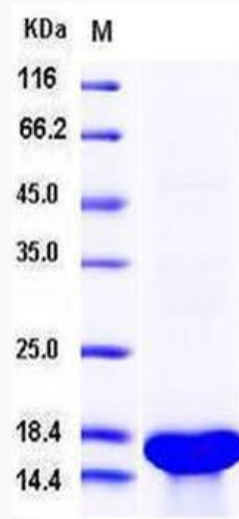
 Tel: 1-631-559-9269 1-516-512-3133

 Email: [info@creative-biomart.com](mailto:info@creative-biomart.com)  Fax: 1-631-938-8127

 45-1 Ramsey Road, Shirley, NY 11967, USA



SDS-PAGE



Tel: 1-631-559-9269 1-516-512-3133

Email: [info@creative-biomart.com](mailto:info@creative-biomart.com) Fax: 1-631-938-8127

45-1 Ramsey Road, Shirley, NY 11967, USA