

Active Recombinant Human NTRK3 protein, hFc&His-tagged

Cat. No. NTRK3-1279H Lot. No. (See product label)

SPECIFICATION

| | |
|-------------------------|---|
| Product Overview | Active Recombinant Human Trk-C/NTRK3 Protein is produced by HEK293 expression system. The target protein is expressed with sequence (Cys32-Asp428) of human TrkC/NTRK3 (Accession #NP_001012338.1) fused with an Fc, 6×His tag at the C-terminus. |
| Species | Human |
| Source | HEK293 |
| ProteinLength | Cys32-Asp428 |
| Form | Lyophilized from a 0.22 μm filtered solution of PBS, pH 7.4. |
| Bio-activity | Measured by its binding ability in a functional ELISA. Immobilized Recombinant Human NTF3 at 2 μg/mL (100 μL/well) can bind Recombinant human TrkC with a linear range of 22-90 ng/mL. |
| Molecular Mass | 120 kDa |
| Endotoxin | < 1.0 EU/μg of the protein by LAL method. |
| Purity | > 97% by SDS-PAGE. |
| Storage | Store the lyophilized protein at -20°C to -80 °C for long term. After reconstitution, the protein solution is stable at -20 °C for 3 months, at 2-8 °C for |

 Tel: 1-631-559-9269 1-516-512-3133

 Email: info@creative-biomart.com  Fax: 1-631-938-8127

 45-1 Ramsey Road, Shirley, NY 11967, USA

up to 1 week.

Reconstitution Reconstitute to a concentration of 0.1-0.5 mg/mL in sterile distilled water.

GENE INFORMATION

Gene Name NTRK3 neurotrophic tyrosine kinase, receptor, type 3 [Homo sapiens]

Official Symbol NTRK3

Synonyms NTRK3; neurotrophic tyrosine kinase, receptor, type 3; NT-3 growth factor receptor; TRKC; GP145-TrkC; ETV6-NTRK3 fusion; tyrosine kinase receptor C; ETS related protein-neurotrophic receptor tyrosine kinase fusion protein; gp145(trkC);

Gene ID 4916

mRNA Refseq NM_001007156

Protein Refseq NP_001007157

MIM 191316

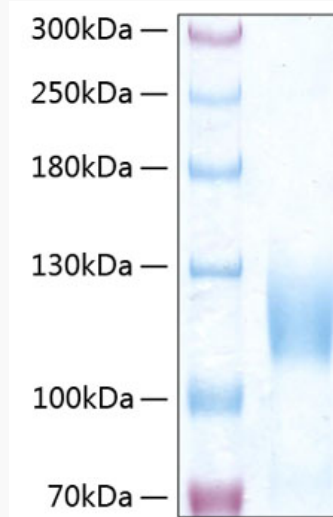
UniProt ID Q16288

 Tel: 1-631-559-9269 1-516-512-3133

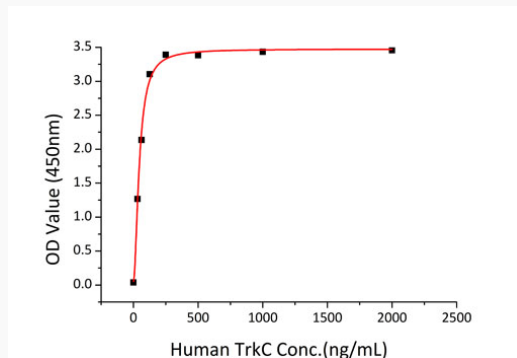
 Email: info@creative-biomart.com  Fax: 1-631-938-8127

 45-1 Ramsey Road, Shirley, NY 11967, USA

SDS-PAGE



Activity



 Tel: 1-631-559-9269 1-516-512-3133

 Email: info@creative-biomart.com  Fax: 1-631-938-8127

 45-1 Ramsey Road, Shirley, NY 11967, USA