

## Active Recombinant Human NTRK3 protein, His&hFc-tagged

Cat. No. NTRK3-159H Lot. No. (See product label)

### SPECIFICATION

<b>Product Overview</b>	Active Recombinant Human NTRK3 protein(Met1-Asp428)(NP_001007157.1) was expressed in Human Cells, fused with the C-terminal polyhistidine-tagged Fc region of human IgG1 at the C-terminus.
<b>Species</b>	Human
<b>Source</b>	Human Cells
<b>ProteinLength</b>	1-428 aa
<b>Form</b>	Lyophilized from sterile PBS, pH 7.4.
<b>Bio-activity</b>	Immobilized human TrkC-Fch at 10 µg/ml (100 µl/well) can bind biotinylated human NT3, The EC50 of biotinylated human NT3 is 23.4-54.6 ng/ml.
<b>Molecular Mass</b>	The recombinant human TrkC/Fc is a disulfide-linked homodimeric protein after removal of the signal peptide. It consists of 644 amino acids and has a calculated molecular mass of 72.5 kDa. As a result of glycosylation, rh TrkC/Fc monomer migrates as an approximately 110-120 kDa protein in SDS-PAGE under reducing conditions.
<b>Endotoxin</b>	< 1.0 EU per µg of the protein as determined by the LAL method.
<b>Purity</b>	> 98 % as determined by SDS-PAGE

 Tel: 1-631-559-9269 1-516-512-3133

 Email: [info@creative-biomart.com](mailto:info@creative-biomart.com)  Fax: 1-631-938-8127

 45-1 Ramsey Road, Shirley, NY 11967, USA

**Storage** Store it under sterile conditions at -20°C to -80°C upon receiving. Recommend to aliquot the protein into smaller quantities for optimal storage. Avoid repeated freeze-thaw cycles.

**Reconstitution** It is recommended that sterile water be added to the vial to prepare a stock solution of 0.2 ug/ul. Centrifuge the vial at 4°C before opening to recover the entire contents.

## GENE INFORMATION

**Gene Name** NTRK3 neurotrophic tyrosine kinase, receptor, type 3 [ Homo sapiens ]

**Official Symbol** NTRK3

**Synonyms** NTRK3; neurotrophic tyrosine kinase, receptor, type 3; NT-3 growth factor receptor; TRKC; GP145-TrkC; ETV6-NTRK3 fusion; tyrosine kinase receptor C; ETS related protein-neurotrophic receptor tyrosine kinase fusion protein; gp145(trkC);

**Gene ID** 4916

**mRNA Refseq** NM\_001007156

**Protein Refseq** NP\_001007157

**MIM** 191316

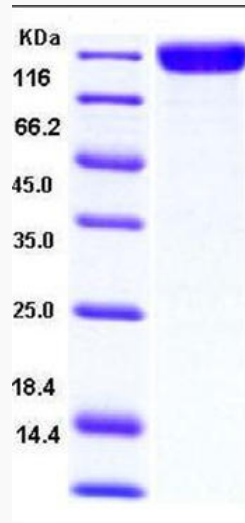
**UniProt ID** Q16288

 Tel: 1-631-559-9269 1-516-512-3133

 Email: [info@creative-biomart.com](mailto:info@creative-biomart.com)  Fax: 1-631-938-8127

 45-1 Ramsey Road, Shirley, NY 11967, USA

SDS-PAGE



 Tel: 1-631-559-9269 1-516-512-3133

 Email: [info@creative-biomart.com](mailto:info@creative-biomart.com)  Fax: 1-631-938-8127

 45-1 Ramsey Road, Shirley, NY 11967, USA