

Recombinant Human NUB1 Protein, Myc/DDK-tagged, C13 and N15-labeled

Cat. No. NUB1-5228H Lot. No. (See product label)

SPECIFICATION

Product Overview

NUB1 MS Standard C13 and N15-labeled recombinant protein (NP_057202) with a C-terminal MYC/DDK tag, was expressed in HEK293 cells.

Species

Human

Source

HEK293

Description

This gene encodes a protein that functions as a negative regulator of NEDD8, a ubiquitin-like protein that conjugates with cullin family members in order to regulate vital biological events. The protein encoded by this gene regulates the NEDD8 conjugation system post-transcriptionally by recruiting NEDD8 and its conjugates to the proteasome for degradation. This protein interacts with the product of the AIPL1 gene, which is associated with Leber congenital amaurosis, an inherited retinopathy, and mutations in that gene can abolish interaction with this protein, which may contribute to the pathogenesis. This protein is also known to accumulate in Lewy bodies in Parkinson's disease and dementia with Lewy bodies, and in glial cytoplasmic inclusions in multiple system atrophy, with this abnormal accumulation being specific to alpha-synucleinopathy lesions. Alternative splicing of this gene results in multiple transcript variants.

Molecular Mass

68.9 kDa

AA Sequence

MAQKKYLQAKLTQFLREDRIQLWKPPYTDENKKVGLALKDLAKQYSRLECCENEV

 Tel: 1-631-559-9269 1-516-512-3133

 Email: info@creative-biomart.com  Fax: 1-631-938-8127

 45-1 Ramsey Road, Shirley, NY 11967, USA

EKVIEEIRCKAIERGTGNDNYRTTGIATIEVFLPPRLKKDRKNLLETRLHITGRELRSKI
 AETFGLQENYIKIVINKKQLQLGKTL EEQGV AHNVKAMVLELKQSEEDARKNFQLEE
 EEQNEAKLKEKQIQRTKRGLEILAKRAAETVVDPEMTPYLDIANQTGRSIRIPPSEK
 ALMLAMGYHEKGRAFLKRKEYGIALPCLLDADKYFCECCRELLD TVDNYAVLQLDIV
 WCYFRLEQLECLDDAEKKNLAQKCFKNCYGENHQRLVHIKGNCGKEKVLFLRLYL
 LQGIRNYHSGNDVEAYEYLNKARQLFKELYIDPSKVDNLLQLGFTAQEARLGLRACD
 GNVDHAATHITNRREELAQIRKEEKEKRRRLENIRFLKGMGYSTHAAQQILLSNPQ
 MWWLNSNPETDNRQESPSQENIDRLVYMGFDALVAEAAALRVFRGNVQLAAQTLA
 HNGGSLPPELPLSPEDSLSPPATSPSDSAGTSSASTDEDMETEAVNEILEDIPEHEE
 DYLDSTLEDEEIIIAEYLSYVENRKSATKKNTRTRPLEQKLISEEDLAANDILDYKDDD
 DKV

Purity > 80% as determined by SDS-PAGE and Coomassie blue staining

Stability Stable for 3 months from receipt of products under proper storage and handling conditions.

Storage Store at -80 centigrade. Avoid repeated freeze-thaw cycles.

Concentration 50 µg/mL as determined by BCA

Storage Buffer 100 mM glycine, 25 mM Tris-HCl, pH 7.3.

GENE INFORMATION

Gene Name NUB1 negative regulator of ubiquitin-like proteins 1 [Homo sapiens (human)]

Official Symbol NUB1

Synonyms NUB1; negative regulator of ubiquitin-like proteins 1; NEDD8 ultimate buster 1; BS4; NYREN18; NEDD8 ultimate buster-1; renal carcinoma antigen NY-REN-18; NUB1L;

 Tel: 1-631-559-9269 1-516-512-3133

 Email: info@creative-biomart.com  Fax: 1-631-938-8127

 45-1 Ramsey Road, Shirley, NY 11967, USA

Gene ID 51667

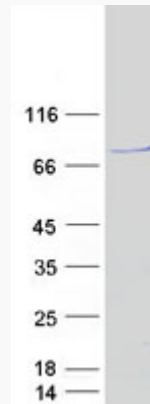
mRNA Refseq NM_016118

Protein Refseq NP_057202

MIM 607981

UniProt ID Q9Y5A7

SDS-PAGE



 Tel: 1-631-559-9269 1-516-512-3133

 Email: info@creative-biomart.com  Fax: 1-631-938-8127

 45-1 Ramsey Road, Shirley, NY 11967, USA