

Recombinant Human NUCB2 Protein, His-tagged, OVA Conjugated

Cat. No. NUCB2-2828H Lot. No. (See product label)

SPECIFICATION

Product Overview	OVA Conjugated Recombinant Human NUCB2 Protein (Ser89-Leu106) fused with a N-His tag.
Species	Human
Source	Protein Conjugation
ProteinLength	Ser89-Leu106
Description	This gene encodes a protein with a suggested role in calcium level maintenance, eating regulation in the hypothalamus, and release of tumor necrosis factor from vascular endothelial cells. This protein binds calcium and has EF-folding domains.
Form	Freeze-dried powder
Purity	> 90%
Applications	Immunogen; SDS-PAGE; WB.
Stability	The thermal stability is described by the loss rate. The loss rate was determined by accelerated thermal degradation test, that is, incubate the protein at 37 centigrade for 48h, and no obvious degradation and precipitation were observed. The loss rate is less than 5% within the expiration date under appropriate storage condition.

 Tel: 1-631-559-9269 1-516-512-3133

 Email: info@creative-biomart.com  Fax: 1-631-938-8127

 45-1 Ramsey Road, Shirley, NY 11967, USA

Storage	Avoid repeated freeze/thaw cycles. Store at 2-8 centigrade for one month. Aliquot and store at -80 centigrade for 12 months.
Storage Buffer	PBS, pH7.4.
Reconstitution	Reconstitute in PBS (pH7.4) to a concentration of 0.1-1.0 mg/mL. Do not vortex.
Conjugation	OVA

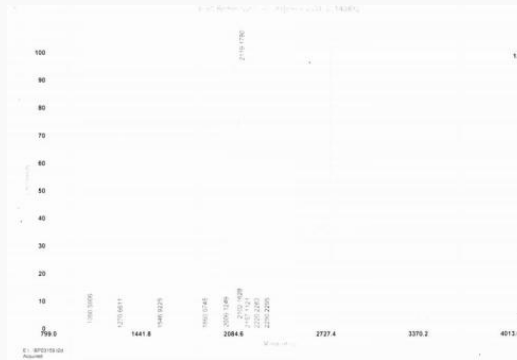
GENE INFORMATION

Gene Name	NUCB2 nucleobindin 2 [Homo sapiens (human)]
Official Symbol	NUCB2
Synonyms	NUCB2; nucleobindin 2; NEFA; HEL-S-109; nucleobindin-2; DNA-binding protein NEFA; epididymis secretory protein Li 109; gastric cancer antigen Zg4; nesfatin 1; novel DNA binding/EF-hand/leucine zipper protein; nucleobinding 2; prepronesfatin
Gene ID	4925
mRNA Refseq	NM_005013
Protein Refseq	NP_005004
MIM	608020
UniProt ID	P80303

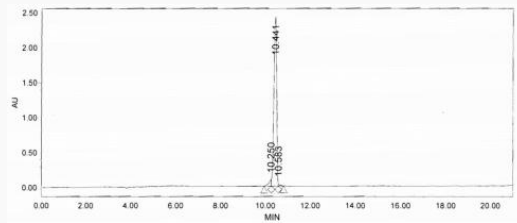
 Tel: 1-631-559-9269 1-516-512-3133

 Email: info@creative-biomart.com  Fax: 1-631-938-8127

 45-1 Ramsey Road, Shirley, NY 11967, USA



HPLC of the Original Peptide



 Tel: 1-631-559-9269 1-516-512-3133

 Email: info@creative-biomart.com  Fax: 1-631-938-8127

 45-1 Ramsey Road, Shirley, NY 11967, USA