

Recombinant Human NUCB2 protein

Cat. No. NUCB2-654H Lot. No. (See product label)

SPECIFICATION

Product Overview	Recombinant Human NUCB2 protein was expressed in Escherichia coli.
Species	Human
Source	E.coli
ProteinLength	82
Description	<p>Nesfatin is a metabolic polypeptide and is the N-terminal region of the precursor protein, Nucleobindin2 (encoded by NUCB2 gene). It is a naturally occurring protein and originally identified as a hypothalamic neuropeptide. Additionally, Nesfatin can be found in other areas of brain, and in pancreatic islets β-cells, gastric endocrine cells and adipocytes. It is responsible for regulating appetite and production of body fat. Excess nesfatin-1 in the brain leads to a loss of appetite, less frequent hunger, a "sense of fullness", and a drop in body fat and weight. A lack of nesfatin-1 in the brain leads to an increase of appetite, more frequent episodes of hunger, an increase of body fat and weight, and the inability to "feel full".</p>
Form	Lyophilized from a 0.2 μ m filtered concentrated solution in PBS, pH 7.4.
Bio-activity	Fully biologically active when compared to standard. The biological activity is tested by in vivo assay using healthy wild type male mice (C57BL/6J).
Molecular Mass	Approximately 9.6 kDa, a single non-glycosylated polypeptide chain containing 82 amino acids.

 Tel: 1-631-559-9269 1-516-512-3133

 Email: info@creative-biomart.com  Fax: 1-631-938-8127

 45-1 Ramsey Road, Shirley, NY 11967, USA

AA Sequence	VPIDIDKTKVQNIHPVESAKIEPPDTGLYYDEYLKQVIDVLETDKHFREKLQKADIEEIK SGRLSKELDLVSHHVRTKLDLDEL
Endotoxin	Less than 1 EU/g of rHuNesfatin-1 as determined by LAL method.
Purity	>95% by SDS-PAGE and HPLC analysis.
Storage	Use a manual defrost freezer and avoid repeated freeze-thaw cycles. 12 months from date of receipt, -20 to -70 centigrade as supplied. 1 month, 2 to 8 centigrade under sterile conditions after reconstitution. 3 months, -20 to -70 centigrade under sterile conditions after reconstitution.
Reconstitution	We recommend that this vial be briefly centrifuged prior to opening to bring the contents to the bottom. Reconstitute in sterile distilled water or aqueous buffer containing 0.1 % BSA to a concentration of 0.1-1.0 mg/mL. Stock solutions should be apportioned into working aliquots and stored at ≤-20 centigrade. Further dilutions should be made in appropriate buffered solutions.

GENE INFORMATION

Gene Name	NUCB2
Official Symbol	NUCB2
Synonyms	NUCB2; nucleobindin 2; nucleobindin-2; NEFA; nucleobinding 2; DNA-binding protein NEFA; gastric cancer antigen Zg4;
Gene ID	4925
mRNA Refseq	NM_005013

 Tel: 1-631-559-9269 1-516-512-3133

 Email: info@creative-biomart.com  Fax: 1-631-938-8127

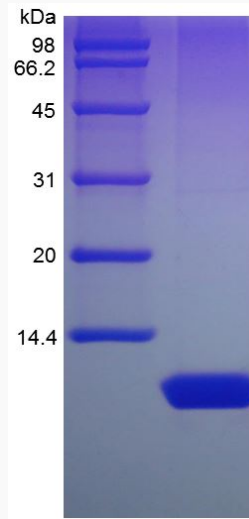
 45-1 Ramsey Road, Shirley, NY 11967, USA

Protein Refseq NP_005004

MIM 608020

UniProt ID P80303

**SDS-PAGE of
NUCB2-654H**



 Tel: 1-631-559-9269 1-516-512-3133

 Email: info@creative-biomart.com  Fax: 1-631-938-8127

 45-1 Ramsey Road, Shirley, NY 11967, USA