

Recombinant Human NUDC Protein, Myc/DDK-tagged, C13 and N15-labeled

Cat. No. NUDC-3982H **Lot. No.** (See product label)

SPECIFICATION

Product Overview	NUDC MS Standard C13 and N15-labeled recombinant protein (NP_006591) with a C-terminal MYC/DDK tag, was expressed in HEK293 cells.
Species	Human
Source	HEK293
Description	This gene encodes a nuclear distribution protein that plays an essential role in mitosis and cytokinesis. The encoded protein is involved in spindle formation during mitosis and in microtubule organization during cytokinesis. Pseudogenes of this gene are found on chromosome 2.
Molecular Mass	38.2 kDa
AA Sequence	<p>MGGEQEEERFDGMLLAMAQQHEGGVQELVNTFFSFLRRKTDFFIGGEEGMAEKLIT QTFSHHNQLAQKTRREKRARQEAERREKAERAARLAKEAKSETSGPQIKELTDEEA ERLQLEIDQKKDAENHEAQLKNGSLDSPGKQDTEEDEEEDKDKGKLPNLGNGAD LPNYRWTQTLSELDAVPFCVNFRLKGMVVDIQRRLRVGLKGPAAIDGELYNE VKVEESSWLIEDGKVVTVHLEKINKMEWWSRLVSSDPEINTKKINPENSKLSLDLSE TRSMVEKMMYDQRQKSMGLPTSDEQKKQEILKKFMDQHPEMDFSKAKFNTRTRPL EQKLISEEDLAANDILDYKDDDDKV</p>
Purity	> 80% as determined by SDS-PAGE and Coomassie blue staining

 Tel: 1-631-559-9269 1-516-512-3133

 Email: info@creative-biomart.com  Fax: 1-631-938-8127

 45-1 Ramsey Road, Shirley, NY 11967, USA

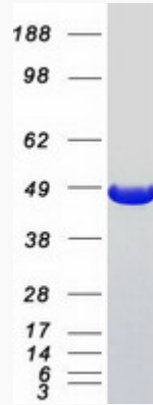
Stability	Stable for 3 months from receipt of products under proper storage and handling conditions.
Storage	Store at -80 centigrade. Avoid repeated freeze-thaw cycles.
Concentration	50 µg/mL as determined by BCA
Storage Buffer	100 mM glycine, 25 mM Tris-HCl, pH 7.3.
GENE INFORMATION	
Gene Name	NUDC nuclear distribution C, dynein complex regulator [Homo sapiens (human)]
Official Symbol	NUDC
Synonyms	NUDC; nuclear distribution C homolog (A. nidulans); nuclear distribution gene C (A.nidulans) homolog, nuclear distribution gene C homolog (A. nidulans); nuclear migration protein nudC; NudC; nuclear distribution gene C homolog; nuclear distribution protein C homolog; HNUDC; MNUDC; NPD011;
Gene ID	10726
mRNA Refseq	NM_006600
Protein Refseq	NP_006591
MIM	610325
UniProt ID	Q9Y266

 Tel: 1-631-559-9269 1-516-512-3133

 Email: info@creative-biomart.com  Fax: 1-631-938-8127

 45-1 Ramsey Road, Shirley, NY 11967, USA

SDS-PAGE



 Tel: 1-631-559-9269 1-516-512-3133

 Email: info@creative-biomart.com  Fax: 1-631-938-8127

 45-1 Ramsey Road, Shirley, NY 11967, USA