

Recombinant Full Length Human NUDT22 Protein, C-Flag-tagged

Cat. No. NUDT22-2103HFL **Lot. No.** (See product label)

SPECIFICATION

| | |
|-------------------------|--|
| Product Overview | Recombinant Full Length Human NUDT22 Protein, fused to Flag-tag at C-terminus, was expressed in Mammalian cells. |
| Species | Human |
| Source | Mammalian Cells |
| Description | Enables UDP-sugar diphosphatase activity and metal ion binding activity. Located in nucleoplasm. |
| Form | 25 mM Tris HCl, pH 7.3, 100 mM glycine, 10% glycerol. |
| Molecular Mass | 32.4 kDa |
| AA Sequence | MDPEVTLLLQCPGGGLPQEIQAEELSPAHDRRPLPGGDEAITAIWETRLKAQPWLF DAPKFRLLHSATLAP IGSRGPQLLLRLGLTSYRDFLGTNWSSSAAWLRQQGATDWG DTQAYLADPLGVGAALATADDFLVFLRRS RQVAEAPGLVDVPGGHPEPQALCPGG SPQHQDLAQQLVVHELFFSSVLQEICDEVNLP LLTLSQPLLLGIA RNETSAGRASAEF YVQCSTLSEQVRKHYSGGPEAHESTGIFFVETQNVRRLPETEMWAELCPSAKGAIL LYNRVQGSPTGAALGSPALLPPL TRTRPLEQKLISEEDLAANDILDYKDDDDKV |
| Purity | > 80% as determined by SDS-PAGE and Coomassie blue staining. |
| Stability | Stable for 12 months from the date of receipt of the product under proper storage and |

 Tel: 1-631-559-9269 1-516-512-3133

 Email: info@creative-biomart.com  Fax: 1-631-938-8127

 45-1 Ramsey Road, Shirley, NY 11967, USA

handling conditions. Avoid repeated freeze-thaw cycles.

Storage Store at -80 centigrade.

Concentration >50 ug/mL as determined by microplate BCA method.

Preparation Recombinant protein was captured through anti-DDK affinity column followed by conventional chromatography steps.

Full Length Full L.

GENE INFORMATION

Gene Name [NUDT22 nudix hydrolase 22 \[Homo sapiens \(human\) \]](#)

Official Symbol [NUDT22](#)

Synonyms MGC13045

Gene ID [84304](#)

mRNA Refseq [NM_032344.4](#)

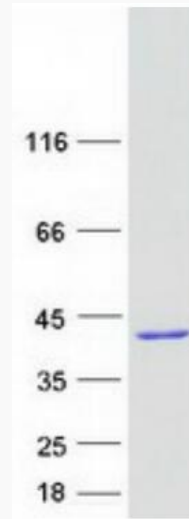
Protein Refseq [NP_115720.2](#)

UniProt ID [Q9BRQ3](#)

 Tel: 1-631-559-9269 1-516-512-3133

 Email: info@creative-biomart.com  Fax: 1-631-938-8127

 45-1 Ramsey Road, Shirley, NY 11967, USA



Coomassie blue staining of purified NUDT22 protein.

 Tel: 1-631-559-9269 1-516-512-3133

 Email: info@creative-biomart.com  Fax: 1-631-938-8127

 45-1 Ramsey Road, Shirley, NY 11967, USA