

Recombinant Human NUDT3 Protein, Myc/DDK-tagged, C13 and N15-labeled

Cat. No. NUDT3-3144H Lot. No. (See product label)

SPECIFICATION

Product Overview	NUDT3 MS Standard C13 and N15-labeled recombinant protein (NP_006694) with a C-terminal MYC/DDK tag, was expressed in HEK293 cells.
Species	Human
Source	HEK293
Description	NUDT3 belongs to the MutT, or Nudix, protein family. Nudix proteins act as homeostatic checkpoints at important stages in nucleoside phosphate metabolic pathways, guarding against elevated levels of potentially dangerous intermediates, like 8-oxo-dGTP, which promotes AT-to-CG transversions.
Molecular Mass	19.3 kDa
AA Sequence	MMKLLSNQTRTYDGDGYKKRAACLFRSESEEEVLLVSSSRHPDRWIVPGGGMEPEEEPSVAAVREVCEEAGVKGTLGRLVGIFENQERKHRTYVYVLIVTEVLEDWEDSVNIGRKREWFKIEDAIKVLQYHKPVQASYFETLRQGYSANNGTPVVATTYSVSAQSSMSGIRTRTRPLEQKLISEEDLAANDILDYKDDDDKV
Purity	> 80% as determined by SDS-PAGE and Coomassie blue staining
Stability	Stable for 3 months from receipt of products under proper storage and handling conditions.

 Tel: 1-631-559-9269 1-516-512-3133

 Email: info@creative-biomart.com  Fax: 1-631-938-8127

 45-1 Ramsey Road, Shirley, NY 11967, USA

Storage	Store at -80 centigrade. Avoid repeated freeze-thaw cycles.
Concentration	50 µg/mL as determined by BCA
Storage Buffer	100 mM glycine, 25 mM Tris-HCl, pH 7.3.
GENE INFORMATION	
Gene Name	NUDT3 nudix hydrolase 3 [Homo sapiens (human)]
Official Symbol	NUDT3
Synonyms	NUDT3; nudix (nucleoside diphosphate linked moiety X)-type motif 3; diphosphoinositol polyphosphate phosphohydrolase 1; DIPP; nudix motif 3; nucleoside diphosphate-linked moiety X motif 3; diadenosine 5,5-P1,P6-hexaphosphate hydrolase 1; DIPP1; DIPP-1;
Gene ID	11165
mRNA Refseq	NM_006703
Protein Refseq	NP_006694
MIM	609228
UniProt ID	O95989

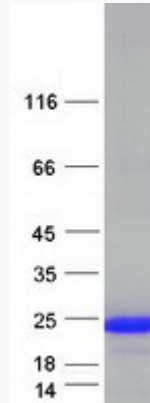
 Tel: 1-631-559-9269 1-516-512-3133

 Email: info@creative-biomart.com  Fax: 1-631-938-8127

 45-1 Ramsey Road, Shirley, NY 11967, USA



SDS-PAGE



Tel: 1-631-559-9269 1-516-512-3133

Email: info@creative-biomart.com Fax: 1-631-938-8127

45-1 Ramsey Road, Shirley, NY 11967, USA