

Recombinant Full Length Human NUF2 Protein, His tagged

Cat. No. NUF2-02HFL Lot. No. (See product label)

SPECIFICATION

Product Overview Purified recombinant protein of Human NUF2, NDC80 kinetochore complex component, homolog (*S. cerevisiae*) (NUF2), transcript variant 1, full length, with N-terminal HIS tag, expressed in *E. coli*.

Species Human

Source E.coli

ProteinLength 1-464 aa

Description This gene encodes a protein that is highly similar to yeast Nuf2, a component of a conserved protein complex associated with the centromere. Yeast Nuf2 disappears from the centromere during meiotic prophase when centromeres lose their connection to the spindle pole body, and plays a regulatory role in chromosome segregation. The encoded protein is found to be associated with centromeres of mitotic HeLa cells, which suggests that this protein is a functional homolog of yeast Nuf2. Alternatively spliced transcript variants that encode the same protein have been described.

Molecular Mass 54.1 kDa

Purity > 80% as determined by SDS-PAGE and Coomassie blue staining

Note For testing in cell culture applications, please filter before use. Note that you may experience some loss of protein during the filtration process.

 Tel: 1-631-559-9269 1-516-512-3133

 Email: info@creative-biomart.com  Fax: 1-631-938-8127

 45-1 Ramsey Road, Shirley, NY 11967, USA

Stability	Stable for 12 months from the date of receipt of the product under proper storage and handling conditions. Avoid repeated freeze-thaw cycles.
Storage	Store at -80 centigrade.
Storage Buffer	25 mM Tris-HCl, pH 8.0, 150 mM NaCl, 1% sarkosyl, 10% glycerol
Concentration	> 0.05 µg/µL as determined by microplate BCA method
Shipping	Dry Ice

GENE INFORMATION

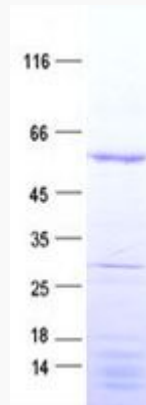
Gene ID	83540
Gene Name	NUF2 NUF2, NDC80 kinetochore complex component, homolog (<i>S. cerevisiae</i>) [<i>Homo sapiens</i> (human)]
Official Symbol	83540
Synonyms	NUF2; NUF2, NDC80 kinetochore complex component, homolog (<i>S. cerevisiae</i>); CDCA1, cell division cycle associated 1; kinetochore protein Nuf2; cancer/testis antigen 106; CT106; NUF2R; hNuf2; hNuf2R; hsNuf2; cell division cycle associated 1; cell division cycle-associated protein 1; CDCA1;
mRNA Refseq	NM_145697
Official Symbol 2	NUF2
Gene ID 2	83540

 Tel: 1-631-559-9269 1-516-512-3133

 Email: info@creative-biomart.com  Fax: 1-631-938-8127

 45-1 Ramsey Road, Shirley, NY 11967, USA

Gene Name 2	NUF2 NUF2, NDC80 kinetochore complex component, homolog (S. cerevisiae) [Homo sapiens (human)]
mRNA Refseq 2	NM_145697
Protein Refseq 2	NP_663735
MIM 2	611772
UniProt ID 2	Q9BZD4

SDS-PAGE

 Tel: 1-631-559-9269 1-516-512-3133

 Email: info@creative-biomart.com  Fax: 1-631-938-8127

 45-1 Ramsey Road, Shirley, NY 11967, USA