

Recombinant Human NUP210 Protein, Myc/DDK-tagged, C13 and N15-labeled

Cat. No. NUP210-5495H **Lot. No.** (See product label)

SPECIFICATION

Product Overview	NUP210 MS Standard C13 and N15-labeled recombinant protein (NP_079199) with a C-terminal MYC/DDK tag, was expressed in HEK293 cells.
Species	Human
Source	HEK293
Description	The nuclear pore complex is a massive structure that extends across the nuclear envelope, forming a gateway that regulates the flow of macromolecules between the nucleus and the cytoplasm. Nucleoporins are the main components of the nuclear pore complex in eukaryotic cells. The protein encoded by this gene is a membrane-spanning glycoprotein that is a major component of the nuclear pore complex. Multiple pseudogenes related to this gene are located on chromosome 3.
Molecular Mass	204.9 kDa
AA Sequence	MAARGRLLLLLSVLLAAGPSAAAAKLNIPKVLLPFTRATRVNFTLEASEGTCYRWLS TRPEVASIEPLGLDEQQCSQKAVVQARLTQPARLTSIIFAEDITGQVLRCDIVDLIH DIQIVSTTRELYLEDSPLELKIQALDSEGNTFSTLAGLVFEWTIVKDSEADRFSDSHNA LRILTFLESTYIPPSYISEMEKAAKQGDTILVSGMKTGSSKLRARIQEAQVYKNVRPAEV RLLILENILLNPAYDVYLMVGTSHYKVQKIRQKGKITELSMPDQYELQLQNSIPGPEG DPARPVAVLAQDTSMTALQLGQSSLVLGHRMIRMQGASRLPNSTIYVVEPGYLGFT VHPGDRWVLETGRLYEITIEVDFKFSNKVYVSDNIRIETVLPAEFFEVLSQQNGSYH

 Tel: 1-631-559-9269 1-516-512-3133

 Email: info@creative-biomart.com  Fax: 1-631-938-8127

 45-1 Ramsey Road, Shirley, NY 11967, USA



RIRALKRGQTAIDAALTSVVDQDGGVHILQVPVWNQQEVEIHIPITLYPSILTFFWQPK
TGAYQYTIRAHGGSGNFSWSSSSHLVATVTVKGVMTTGS DIGFSVIQAHVDVQNPLH
FGEMKVYVIEPHSMEFAPCQVEARVQALELPLRISGLMPGGASEVVTLSDCSHFD
LAVEVENQGVFQPLPGRLLPPGSEHC SGIRVKAE AQGSTLLVSYRHGHVHLSAKITI
AAYLPLKAVDPSSVALVTLGSSKEMLFEGGPRPWILEPSKFFQNVTAEDTDSIGLALF
APHSSRNYQQHWILVTCQALGEQVIALSVGNKPSLTNPFPAVEPAVVKFVCAPPSRL
TLAPVYTSPQLDMSCPLLQQNKQVVPVSSHRNPRDLAAYDQEGRRFDNFSSLSIQ
WESTRPVLASIEPELPMQLVSQDDESGQKKLHGLQAILVHEASGTTAITATATGYQE
SHLSSARTKQPHDPLVPLSASIELILVEDVRSPEEVTIYNHPGIQAE LRIREGSGYFF
LNTSTADVVKVAYQEARGVAMVHPLLPGSSTIMI HDLCLVFPAPAKAVVYVSDIQELY
IRVVDKVEIGKTVKAYVRVLDLHKKPFLAKYFPFMDLKLRAASPIITLVALDEALDNYTI
TFLIRGVAIGQTSLTASVTNKAGQRINSAPQQIEVFPFRLMPRKVTLLIGATMQVTSE
GGPQPQSNILFSISNESVALVSAAGLVQGLAIGNGTVSGLVQAVDAETGKVVII SQDL
VQVEVLLLRAVRIRAPIMRMRTGTQMPIYVTGITNHQNPFSFGNAV PGLTFHWSVTK
RDVLDLRGRHHEASIRLPSQYNFAMNVLGRVKGRTGLRVVVKAVDPTSGQLYGLAR
ELSDEIQVQVFEKLQLLNPEIEAEQILMSPNSYIKLQTNRDGAASLSYRVLDGPEKVP
VVHVDEKGF LASGSMIGTSTIEVIAQEPFGANQTIIVAVKVSPVSYLRVSMSPVLHTQ
NKEALVAVPLGMTVTFTVHFHDNSGDVFHAHSSVLNFATNRDDFVQIGKGPTNNTC
VVRTVSVGLTLLRVWDAEHPGLSDFMPLPVLQAISPELSGAMVVGDLCLATVLTSL
EGLSGTWSSSANSILHIDPKTGVAVARAVGSVTVYYEVAGHLRTYKEVVVSV PQRIM
ARHLHPIQTSFQEATASKVIVAVGDRSSNLRGECTPTQREVIQALHPETLISCQSQFK
PAVDFPQSQDVFTVEPQFD TALGQYFCSITMHR LTKQRKHL SMKKTALVVSASLSS
SHFSTEQVGAEVPFSPGLFADQAEILLSNHYSSEIRVFGAPEVLENLEVKSGSPAVL
AFAKEKSGWPSFITYTVGVLDPAAGSQGPLSTTLTFSSPVTNQAIAIPVTVA FVVDR
RGP GPY GASLFQHFLDSYQVMFFTLFALLAGTAVMIIAYHTVCTPRDLAVPAALTPRA
SPGHSPHYFAASSPTSPNALPPARKASPPSGLWSPAYASHTRTRPLEQKLISEEDLA
ANDILDYKDDDDKV

Purity

> 80% as determined by SDS-PAGE and Coomassie blue staining

Tel: 1-631-559-9269 1-516-512-3133

Email: info@creative-biomart.com Fax: 1-631-938-8127

45-1 Ramsey Road, Shirley, NY 11967, USA

Stability	Stable for 3 months from receipt of products under proper storage and handling conditions.
Storage	Store at -80 centigrade. Avoid repeated freeze-thaw cycles.
Concentration	50 µg/mL as determined by BCA
Storage Buffer	100 mM glycine, 25 mM Tris-HCl, pH 7.3.

GENE INFORMATION

Gene Name	NUP210 nucleoporin 210kDa [Homo sapiens (human)]
Official Symbol	NUP210
Synonyms	NUP210; nucleoporin 210kDa; nuclear pore membrane glycoprotein 210; FLJ22389; GP210; KIAA0906; POM210; nucleoporin Nup210; nuclear pore protein gp210; pore membrane protein of 210 kDa; nuclear envelope pore membrane protein POM 210;
Gene ID	23225
mRNA Refseq	NM_024923
Protein Refseq	NP_079199
MIM	607703
UniProt ID	Q8TEM1

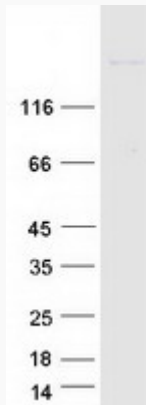
 Tel: 1-631-559-9269 1-516-512-3133

 Email: info@creative-biomart.com  Fax: 1-631-938-8127

 45-1 Ramsey Road, Shirley, NY 11967, USA



SDS-PAGE



Tel: 1-631-559-9269 1-516-512-3133

Email: info@creative-biomart.com Fax: 1-631-938-8127

45-1 Ramsey Road, Shirley, NY 11967, USA