

Recombinant Human NUP35 Protein, Myc/DDK-tagged, C13 and N15-labeled

Cat. No. NUP35-2619H Lot. No. (See product label)

SPECIFICATION

Product Overview

NUP35 MS Standard C13 and N15-labeled recombinant protein (NP_612142) with a C-terminal MYC/DDK tag, was expressed in HEK293 cells.

Species

Human

Source

HEK293

Description

This gene encodes a member of the nucleoporin family. The encoded protein contains two membrane binding regions, is localized to the nuclear rim, and is part of the nuclear pore complex. All molecules entering or leaving the nucleus either diffuse through or are actively transported by the nuclear pore complex. Alternative splicing results in multiple transcript variants. Pseudogenes of this gene have been defined on chromosomes 7 and 10.

Molecular Mass

34.8 kDa

AA Sequence

MAFAVEPQGPALGSEPMMLGSPTSPKPGVNAQFLPGFLMGDLPAPVTPQPR
 GPSVGVMEMRSPLLAGGSPQPVVPAHKDKSGAPPVRSIYDDISSPGLGSTPLTSR
 RQPNISVMQSPLVGVSTSTPGTGQSMFSPASIGQPRKTTLSPAQLDPFYTQGDSLTS
 EDHLDDSWVTVFGFPQASASYILLQFAQYGNILKHVMSNTGNWMHIRYQSKLQARK
 ALSKDGRIFGESIMIGVKPCIDKSVMESSDRCALSSPSLAFTPPIKTLGTPTQPGSTPR
 ISTMRPLATAYKASTSDYQVISDRQTPKKDESLVSKAMEYMFGWTRTRPLEQKLISE
 EDLAANDILDYKDDDDKV

 Tel: 1-631-559-9269 1-516-512-3133

 Email: info@creative-biomart.com  Fax: 1-631-938-8127

 45-1 Ramsey Road, Shirley, NY 11967, USA

Purity	> 80% as determined by SDS-PAGE and Coomassie blue staining
Stability	Stable for 3 months from receipt of products under proper storage and handling conditions.
Storage	Store at -80 centigrade. Avoid repeated freeze-thaw cycles.
Concentration	50 µg/mL as determined by BCA
Storage Buffer	100 mM glycine, 25 mM Tris-HCl, pH 7.3.

GENE INFORMATION

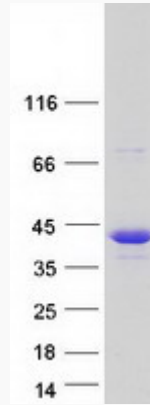
Gene Name	NUP35 nucleoporin 35kDa [Homo sapiens (human)]
Official Symbol	NUP35
Synonyms	NUP35; nucleoporin 35kDa; nucleoporin NUP53; MP44; MP-44; nucleoporin Nup35; 35 kDa nucleoporin; mitotic phosphoprotein 44; nuclear pore complex protein Nup53; NP44; NUP53;
Gene ID	129401
mRNA Refseq	NM_138285
Protein Refseq	NP_612142
MIM	608140
UniProt ID	Q8NFH5

 Tel: 1-631-559-9269 1-516-512-3133

 Email: info@creative-biomart.com  Fax: 1-631-938-8127

 45-1 Ramsey Road, Shirley, NY 11967, USA

SDS-PAGE



 Tel: 1-631-559-9269 1-516-512-3133

 Email: info@creative-biomart.com  Fax: 1-631-938-8127

 45-1 Ramsey Road, Shirley, NY 11967, USA