

Recombinant Human NUSAP1 Protein, His-tagged

Cat. No. NUSAP1-2518H Lot. No. (See product label)

SPECIFICATION

Product Overview	Recombinant Human NUSAP1 Protein (Gly237-Gln382) with a N-His tag was expressed in E. coli.
Species	Human
Source	E.coli
ProteinLength	Gly237-Gln382
Description	NUSAP1 is a nucleolar-spindle-associated protein that plays a role in spindle microtubule organization.
Form	Freeze-dried powder
Molecular Mass	Predicted Molecular Mass: 19.1 kDa Accurate Molecular Mass: 20 kDa
Endotoxin	<1.0 EU per 1g (determined by the LAL method).
Purity	> 95%
Applications	Positive Control; Immunogen; SDS-PAGE; WB.
Stability	The thermal stability is described by the loss rate. The loss rate was determined by accelerated thermal degradation test, that is, incubate the protein at 37 centigrade for

 Tel: 1-631-559-9269 1-516-512-3133

 Email: info@creative-biomart.com  Fax: 1-631-938-8127

 45-1 Ramsey Road, Shirley, NY 11967, USA

48h, and no obvious degradation and precipitation were observed. The loss rate is less than 5% within the expiration date under appropriate storage condition.

Storage

Avoid repeated freeze/thaw cycles. Store at 2-8 centigrade for one month. Aliquot and store at -80 centigrade for 12 months.

Storage Buffer

20mM Tris, 150mM NaCl, pH8.0, containing 1mM EDTA, 1mM DTT, 0.01% SKL, 5% Trehalose and Proclin300.

Reconstitution

Reconstitute in 20mM Tris, 150mM NaCl (pH8.0) to a concentration of 0.1-1.0 mg/mL. Do not vortex.

GENE INFORMATION

Gene Name

NUSAP1 nucleolar and spindle associated protein 1 [Homo sapiens (human)]

Official Symbol

NUSAP1

Synonyms

NUSAP1; nucleolar and spindle associated protein 1; nucleolar and spindle-associated protein 1; ANKT; BM037; FLJ13421; LNP; NuSAP1; PRO0310p1; Q0310; SAPL; nucleolar protein ANKT; NUSAP;

Gene ID

51203

mRNA Refseq

NM_001243142

Protein Refseq

NP_001230071

MIM

612818

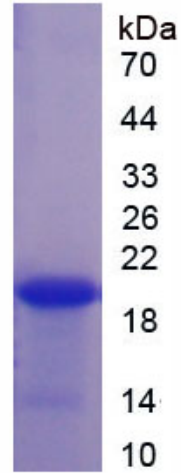
UniProt ID

Q9BXS6

 Tel: 1-631-559-9269 1-516-512-3133

 Email: info@creative-biomart.com  Fax: 1-631-938-8127

 45-1 Ramsey Road, Shirley, NY 11967, USA



Tel: 1-631-559-9269 1-516-512-3133

Email: info@creative-biomart.com Fax: 1-631-938-8127

45-1 Ramsey Road, Shirley, NY 11967, USA