

Recombinant Human Nuclear Transport Factor 2, His-tagged

Cat. No. NUTF2-2566H Lot. No. (See product label)

SPECIFICATION

Product Overview	Recombinant human NUTF2, fused to His-tag at N-terminus, was expressed in <i>E.coli</i> and purified by using conventional chromatography. MW =16.6 kDa(147aa).
Species	Human
Source	E.coli
Description	NUTF2 is a cytosolic factor that facilitates protein transport into the nucleus. It interacts with the nuclear pore complex glycoprotein p62 and Ran. This protein acts at a relative late stage of nuclear protein import, subsequent to the initial docking of nuclear import ligand at the nuclear envelope. It binds directly to RanGDP and may modulate the steady-state distribution of Ran.
Sequences Of Amino Acids	MGSSHHHHHH SSGLVPRGSH MGDKPIWEQI GSSFIQHYYQ LFDNDRTQLG AIYIDASCLT WEGQQFQGKA AIVEKLSSLP FQKIQHSITA QDHQTPDSC IISMVVGQLK ADEDPIMGFH QMFLKNIND AWWCTNDMFR LALHNFG
Purity	> 95% by SDS – PAGE.
Form	Liquid. In 20 mM Tris-HCl Buffer (pH 8.0) containing 10% Glycerol.
Concentration	1 mg/ml (determined by Bradford assay).
Storage	Can be stored at +4°C short term (1-2 weeks). For long term storage, aliquot and store at -20°C or -70°C. Avoid repeated freezing and thawing cycles.

 Tel: 1-631-559-9269 1-516-512-3133

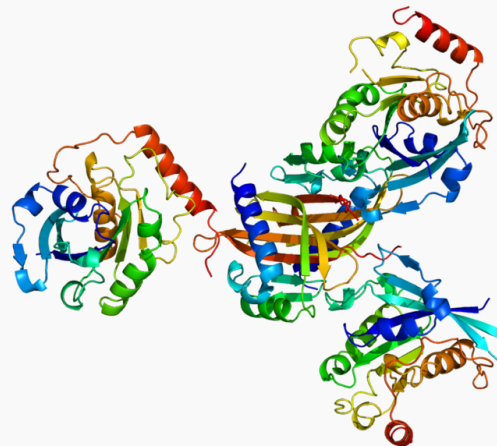
 Email: info@creative-biomart.com  Fax: 1-631-938-8127

 45-1 Ramsey Road, Shirley, NY 11967, USA

GENE INFORMATION

Gene Name	NUTF2 nuclear transport factor 2 [Homo sapiens]
Synonyms	NUTF2; nuclear transport factor 2; NTF2; PP15; NTF-2; placental protein 15
Gene ID	10204
mRNA Refseq	NM_005796
Protein Refseq	NP_005787
MIM	605813
UniProt ID	P61970
Chromosome Location	16q22.1
Function	protein binding; protein transporter activity; transporter activity

PDB rendering based on 1a2k.



 Tel: 1-631-559-9269 1-516-512-3133

 Email: info@creative-biomart.com  Fax: 1-631-938-8127

 45-1 Ramsey Road, Shirley, NY 11967, USA