

Recombinant Human NUTF2 Protein, Myc/DDK-tagged, C13 and N15-labeled

Cat. No. NUTF2-3863H Lot. No. (See product label)

SPECIFICATION

Product Overview	NUTF2 MS Standard C13 and N15-labeled recombinant protein (NP_005787) with a C-terminal MYC/DDK tag, was expressed in HEK293 cells.
Species	Human
Source	HEK293
Description	This gene encodes a cytosolic factor that facilitates protein transport into the nucleus. The encoded protein is required for nuclear import of the small Ras-like GTPase, Ran which is involved in numerous cellular processes. This protein also interacts with the nuclear pore complex glycoprotein p62.
Molecular Mass	14.5 kDa
AA Sequence	MGDKPIWEQIGSSFIQHYYQLFDNDRTQLGAIYIDASCLTWEGQQFQGKAAIVEKLS SLPFQKIQHSITAQDHQPTPDSCIISMVVGQLKADEDPIMGFHQMFLLKNINDAWVCT NDMFRLLAHNFGSGPTRTRPLEQKLISEEDLAANDILDYKDDDDKV
Purity	> 80% as determined by SDS-PAGE and Coomassie blue staining
Stability	Stable for 3 months from receipt of products under proper storage and handling conditions.
Storage	Store at -80 centigrade. Avoid repeated freeze-thaw cycles.

 Tel: 1-631-559-9269 1-516-512-3133

 Email: info@creative-biomart.com  Fax: 1-631-938-8127

 45-1 Ramsey Road, Shirley, NY 11967, USA

Concentration 50 µg/mL as determined by BCA

Storage Buffer 100 mM glycine, 25 mM Tris-HCl, pH 7.3.

GENE INFORMATION

Gene Name NUTF2 nuclear transport factor 2 [Homo sapiens (human)]

Official Symbol NUTF2

Synonyms NUTF2; nuclear transport factor 2; NTF2; PP15; NTF-2; placental protein 15;

Gene ID 10204

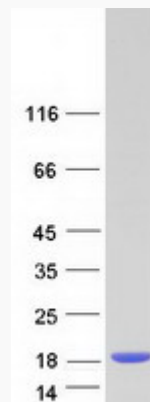
mRNA Refseq NM_005796

Protein Refseq NP_005787

MIM 605813

UniProt ID P61970

SDS-PAGE



 Tel: 1-631-559-9269 1-516-512-3133

 Email: info@creative-biomart.com  Fax: 1-631-938-8127

 45-1 Ramsey Road, Shirley, NY 11967, USA