

Recombinant Human NVL Protein, Myc/DDK-tagged, C13 and N15-labeled

Cat. No. NVL-1855H **Lot. No.** (See product label)

SPECIFICATION

Product Overview	NVL MS Standard C13 and N15-labeled recombinant protein (NP_002524) with a C-terminal MYC/DDK tag, was expressed in HEK293 cells.
Species	Human
Source	HEK293
Description	This gene encodes a member of the AAA (ATPases associated with diverse cellular activities) superfamily. Multiple transcript variants encoding different isoforms have been found for this gene. Two encoded proteins, described as major and minor isoforms, have been localized to distinct regions of the nucleus. The largest encoded protein (major isoform) has been localized to the nucleolus and shown to participate in ribosome biosynthesis (PMID: 15469983, 16782053), while the minor isoform has been localized to the nucleoplasm.
Molecular Mass	94.9 kDa
AA Sequence	MKPRPAGFVDNKLKQRVIQYLTSNKCCKYVDIGVLASDLQRVYSIDYGRRKRNAFRI QVEKVFSIISSEKELKNLTELEDEHLAKRARQGEEDNEYTESYSDDDSSMEDYPDPQ SANHMNSSLLSLYRKGPNPDSVSNTPEMEQRETTSSPTRISSKTGSIPLKTPAKDSEG GWFIDKTPSVKKDSFFLDLSCEKSNPKKPITEIQDSKSSLLESDMKRKGKLNKGS KRKKEDLQEVGDGEIEAVLQKKAKARGLEFQISNVKFFEDVGGNDMTLKEVCKMLIHMR HPEVYHHLGVVPPRGVLLHGPPGCGKTLAHAIAGELDLPILKVAAPEIVSGVSGESE

 Tel: 1-631-559-9269 1-516-512-3133

 Email: info@creative-biomart.com  Fax: 1-631-938-8127

 45-1 Ramsey Road, Shirley, NY 11967, USA

QKLRELFEQAVSNAPCIIFIDEIDAITPKREVASKDMERRIVAQLLTCMDDLNNVAATA
 RVLVIGATNRPDSLDPALRRAGRFDREICLGPIDEASRERILQTLCKRKLRLPQAFDFC
 HLAHLTPGFVVGADLMALCREAAMCAVNRVLMKLQEQQKKNPEMEDLPSKGVQEER
 LGTEPTSETQDELQRLLGLLRDQDPLSEEQMQGLCIELNDFIVALSSVQPSAKREGF
 VTVPNVTWADIGALE DIREELTMAILAPVRNPDQFKALGLVTPAGVLLAGPPGCGKTL
 LAKAVANESGLNFISVKGPELLNMYVGESERAVRQVFQRAKNSAPCVIFFDEVDALC
 PRRSDRETGASVRVVNQLLTEM DGLEARQQVFIMAATNRPDIIDPAILRPGRLDKTLF
 VGLPPPADRLAILKTITKNGTKPPLDADVNL EAIAGDLRCD CYTGADLSALVREASICA
 LRQEMARQKSGNEKGELKVSHKHFE EAFKKVRSSISKKDQIMYERLQESLSRTRTR
 PLEQKLISEEDLAANDILDYKDDDDKV

Purity > 80% as determined by SDS-PAGE and Coomassie blue staining

Stability Stable for 3 months from receipt of products under proper storage and handling conditions.

Storage Store at -80 centigrade. Avoid repeated freeze-thaw cycles.

Concentration 50 µg/mL as determined by BCA

Storage Buffer 100 mM glycine, 25 mM Tris-HCl, pH 7.3.

GENE INFORMATION

Gene Name NVL nuclear VCP-like [Homo sapiens (human)]

Official Symbol NVL

Synonyms NVL; nuclear VCP-like; nuclear valosin-containing protein-like; Nuclear valosin containing protein like; nuclear VCP like protein; NVLp;

 Tel: 1-631-559-9269 1-516-512-3133

 Email: info@creative-biomart.com  Fax: 1-631-938-8127

 45-1 Ramsey Road, Shirley, NY 11967, USA

Gene ID 4931

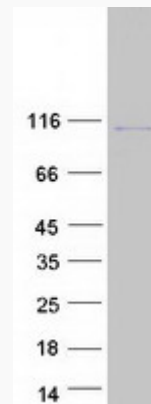
mRNA Refseq NM_002533

Protein Refseq NP_002524

MIM 602426

UniProt ID O15381

SDS-PAGE



 Tel: 1-631-559-9269 1-516-512-3133

 Email: info@creative-biomart.com  Fax: 1-631-938-8127

 45-1 Ramsey Road, Shirley, NY 11967, USA