

Recombinant Human NVL Protein, Myc/DDK-tagged, C13 and N15-labeled

Cat. No. NVL-5695H **Lot. No.** (See product label)

SPECIFICATION

Product Overview	NVL MS Standard C13 and N15-labeled recombinant protein (NP_996671) with a C-terminal MYC/DDK tag, was expressed in HEK293 cells.
Species	Human
Source	HEK293
Description	This gene encodes a member of the AAA (ATPases associated with diverse cellular activities) superfamily. Multiple transcript variants encoding different isoforms have been found for this gene. Two encoded proteins, described as major and minor isoforms, have been localized to distinct regions of the nucleus. The largest encoded protein (major isoform) has been localized to the nucleolus and shown to participate in ribosome biosynthesis (PMID: 15469983, 16782053), while the minor isoform has been localized to the nucleoplasm.
Molecular Mass	82.6 kDa
AA Sequence	MEDYPDPQSANHMNSSLLSLYRKGNPDSVSNTPEMEQRETTSSSTPRISSKTGSIPL KTPAKDSEGGWFIDKTPSVKKDSFFLDLSCEKSNPKKPITEIQDSKSSLLESMDKR KGKLNKNGSKRKKEDLQEV DGEIEAVLQKKAKARGLEFQISNVKFEDVGGNDMTLK EVCKMLIHMRHPEVYHHLGVVPPRGVLLHGPPGCGKTL LAHAIAGELDLPILKVAAP EIVSGVSGESEQKLRELFEQAVSNAPCIIFIDEIDAITPKREVASKDMERRIVAQLLTC MDDLNNVAATARVLVIGATNRPDSLDPALRRAGRFDREICLGIPDEASRERILQTLCR

 Tel: 1-631-559-9269 1-516-512-3133

 Email: info@creative-biomart.com  Fax: 1-631-938-8127

 45-1 Ramsey Road, Shirley, NY 11967, USA

KLRLPQAFDFCHLAHLTPGFVGADLMALCREAAMCAVNRVLMKLQEQQKKNPEME
 DLPSKGVQEERLGTPTSETQDELQRLLGLLRDQDPLSEEQMQGLCIELNDFIVALS
 SVQPSAKREGFVTVPNVTWADIGALEDIREELTMAILAPVRNPDQFKALGLVTPAGV
 LLAGPPGCGKTLAKAVANESGLNFISVKGPELLNMYVGESERAVRQVFQRAKNSA
 PCVIFFDVLDALCPRRSRETGASVRVVNQLLEMDGLEARQQVFIMAATNRPDIID
 PAILRPGRLDKTLFVGLPPPADRLAILKTITKNGTKPPLDADVNLEAIAGDLRCDQCYTG
 ADSALVREASICALRQEMARQKSGNEKGELKVSHKHFEAFKKVRSSISKDQIMY
 ERLQESLSRTRTRPLEQKLISEEDLAANDILDYKDDDDKV

Purity > 80% as determined by SDS-PAGE and Coomassie blue staining

Stability Stable for 3 months from receipt of products under proper storage and handling conditions.

Storage Store at -80 centigrade. Avoid repeated freeze-thaw cycles.

Concentration 50 µg/mL as determined by BCA

Storage Buffer 100 mM glycine, 25 mM Tris-HCl, pH 7.3.

GENE INFORMATION

Gene Name NVL nuclear VCP-like [*Homo sapiens (human)*]

Official Symbol NVL

Synonyms NVL; nuclear VCP-like; nuclear valosin-containing protein-like; Nuclear valosin containing protein like; nuclear VCP like protein; NVLp;

Gene ID 4931

 Tel: 1-631-559-9269 1-516-512-3133

 Email: info@creative-biomart.com  Fax: 1-631-938-8127

 45-1 Ramsey Road, Shirley, NY 11967, USA

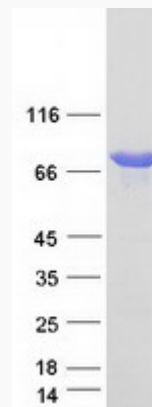
mRNA Refseq [NM_206840](#)

Protein Refseq [NP_996671](#)

MIM [602426](#)

UniProt ID [O15381](#)

SDS-PAGE



 Tel: 1-631-559-9269 1-516-512-3133

 Email: info@creative-biomart.com  Fax: 1-631-938-8127

 45-1 Ramsey Road, Shirley, NY 11967, USA