

## Recombinant Human NXF1 protein, His-tagged

**Cat. No.** NXF1-1428H    **Lot. No.** (See product label)

### SPECIFICATION

<b>Product Overview</b>	Recombinant Human NXF1 protein (45-349aa) was fused to His-tag and expressed in E.coli.
<b>Species</b>	Human
<b>Source</b>	E.coli
<b>ProteinLength</b>	45-349 a.a.
<b>Description</b>	<p>This gene is one member of a family of nuclear RNA export factor genes. Common domain features of this family are a noncanonical RNP-type RNA-binding domain (RBD), 4 leucine-rich repeats (LRRs), a nuclear transport factor 2 (NTF2)-like domain that allows heterodimerization with NTF2-related export protein-1 (NXT1), and a ubiquitin-associated domain that mediates interactions with nucleoporins. The LRRs and NTF2-like domains are required for export activity. Alternative splicing seems to be a common mechanism in this gene family. The encoded protein of this gene shuttles between the nucleus and the cytoplasm and binds in vivo to poly(A)<sup>+</sup> RNA. It is the vertebrate homologue of the yeast protein Mex67p. The encoded protein overcomes the mRNA export block caused by the presence of saturating amounts of CTE (constitutive transport element) RNA of type D retroviruses. Alternative splicing results in multiple transcript variants.</p>
<b>Form</b>	The purified protein was Lyophilized from sterile PBS (58mM Na <sub>2</sub> HPO <sub>4</sub> , 17mM NaH <sub>2</sub> PO <sub>4</sub> , 68mM NaCl, pH7.). 5% trehalose and 5% mannitol are added as

 Tel: 1-631-559-9269    1-516-512-3133

 Email: [info@creative-biomart.com](mailto:info@creative-biomart.com)     Fax: 1-631-938-8127


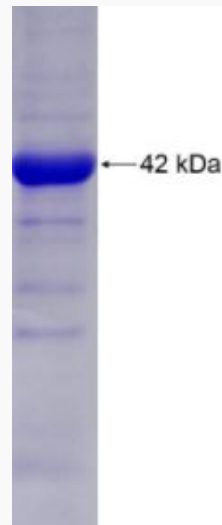
 45-1 Ramsey Road, Shirley, NY 11967, USA

	protectants before lyophilization.
<b>Molecular Mass</b>	42 kDa
<b>AA Sequence</b>	<p>SGIRSSRLEEDDGDVAMSDAQDGPRVRYNPYTTRPNRRGDTWHDRDRIHVTVRRD  RAPPERGGAGTSQDGTSKNWFKITIPYGRKYDKAWLLSMIQSKCSVPFTPIEFHYEN  TRAQFFVEDASTASALKAVNYKILDRENRRISIIINSSAPPHTILNELKPEQVEQLKLIM  SKRYDGSQQALDLKGLRSDPDLVAQNIDVVLNRRSCMAATLRIIEENIPELLSLNLSN  NRLYRLDDMSSIVQKAPNLKILNLSGNELKSERELDKIKGLKLEELWLDGNSLCDTFR  DQSTYISAIRERFPKLL</p>
<b>Purity</b>	85%, by SDS-PAGE with Coomassie Brilliant Blue staining.
<b>Storage</b>	<p>Short-term storage: Store at 2-8°C for (1-2 weeks).</p> <p>Long-term storage: Aliquot and store at -20°C to -80°C for up to 3 months, buffer containing 50% glycerol is recommended for reconstitution. Avoid repeat freeze-thaw cycles.</p>
<b>Reconstitution</b>	<p>Reconstitute at 0.25 g/μl in 200 μl sterile water for short-term storage.</p> <p>Reconstitution with 200 μl 50% glycerol solution is recommended for longer term storage.</p> <p>If a different concentration is needed for your purposes please adjust the reconstitution volume as required (please note: the ion concentration of the final solution will vary according to the volume used).</p> <p>Note: Centrifuge vial before opening. When reconstituting, gently pipet and wash down the sides of the vial to ensure full recovery of the protein into solution.</p>
<b>Shipping</b>	The product is shipped at ambient temperature. Upon receipt, store it immediately at the recommended temperature.

 Tel: 1-631-559-9269 1-516-512-3133

 Email: [info@creative-biomart.com](mailto:info@creative-biomart.com)  Fax: 1-631-938-8127

 45-1 Ramsey Road, Shirley, NY 11967, USA

**GENE INFORMATION****Gene Name** NXF1**Official Symbol** NXF1**Synonyms** TAP; MEX67**Gene ID** 10482**mRNA Refseq** NM\_006362.5**Protein Refseq** NP\_006353.2**MIM** 602647**UniProt ID** Q9UBU9**SDS-PAGE of NXF1-1428H** Tel: 1-631-559-9269 1-516-512-3133 Email: [info@creative-biomart.com](mailto:info@creative-biomart.com)  Fax: 1-631-938-8127 45-1 Ramsey Road, Shirley, NY 11967, USA