

Recombinant Full Length Human NXPE2 Protein, C-Flag-tagged

Cat. No. NXPE2-1580HFL **Lot. No.** (See product label)

SPECIFICATION

Product Overview	Recombinant Full Length Human NXPE2 Protein, fused to Flag-tag at C-terminus, was expressed in Mammalian cells.
Species	Human
Source	Mammalian Cells
Description	Predicted to be integral component of membrane.
Form	25 mM Tris HCl, pH 7.3, 100 mM glycine, 10% glycerol.
Molecular Mass	64.7 kDa
AA Sequence	<p>MVEKILIHRI LTFPNAIARKLLLMLTFILIFWIIYLASKDHTKFSFNLENHIILNQGNIFKK YSHSETP LCPAVSPKETELRIKDIMEKLDQQIPPRPFTHVNTTTSATHSTATILNPQD TYCRGDQLDILLEVRDHLG HRKQYGGDFLRARMYSTALMAGASGKVTDNFNGTYL VSFTLFWEGQVSLSLLLIHPSEGVSALWRARNQG CDRIIFTGLFANRSSNVFTECGL TLNTNAELCQYMDDRDQEAFCVVRPQHMPCEALTHMTTRTRNISYLS KEEWRLFH RSNIGVEMMKNFPTIEVIPCNKSENIKKNCQIGMKTPFPPSGYTLKKMWITAFCKQIKF NETK NINDCLERKLIYLMGDSTLHQWIIYLLQKAVKTLKYFDHHGAGIFKTHVLLDVER HILIQWKKHGHFPVTK KLFSVKDENYIPREIDQVAGDKNTAIVITLGQHFRFPINIFIR RAINIQKAIERLFLRSPETKVILKTE NTREIEQNAEMFSDFHGYIQNLIIRDIFVDLNVGII DAWDMTIAYCTNNAHPPDYVIQNQIGMFLNYICTRTRPLEQKLISEEDLAANDILDYK DDDDKV</p>

 Tel: 1-631-559-9269 1-516-512-3133

 Email: info@creative-biomart.com  Fax: 1-631-938-8127

 45-1 Ramsey Road, Shirley, NY 11967, USA

Purity	> 80% as determined by SDS-PAGE and Coomassie blue staining.
Stability	Stable for 12 months from the date of receipt of the product under proper storage and handling conditions. Avoid repeated freeze-thaw cycles.
Storage	Store at -80 centigrade.
Concentration	>50 ug/mL as determined by microplate BCA method.
Preparation	Recombinant protein was captured through anti-DDK affinity column followed by conventional chromatography steps.
Protein Families	Transmembrane
Full Length	Full L.

GENE INFORMATION

Gene Name	NXPE2 neurexophilin and PC-esterase domain family member 2 [Homo sapiens (human)]
Official Symbol	NXPE2
Synonyms	FAM55B
Gene ID	120406
mRNA Refseq	NM_182495.6
Protein Refseq	NP_872301.2

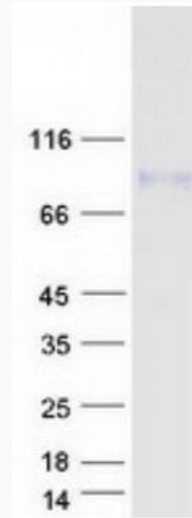
 Tel: 1-631-559-9269 1-516-512-3133

 Email: info@creative-biomart.com  Fax: 1-631-938-8127

 45-1 Ramsey Road, Shirley, NY 11967, USA

UniProt ID

Q96DL1



Coomassie blue staining of purified NXPE2 protein.

 Tel: 1-631-559-9269 1-516-512-3133

 Email: info@creative-biomart.com  Fax: 1-631-938-8127

 45-1 Ramsey Road, Shirley, NY 11967, USA