

Recombinant Human NXPE2 Protein, Myc/DDK-tagged, C13 and N15-labeled

Cat. No. NXPE2-2737H **Lot. No.** (See product label)

SPECIFICATION

Product Overview	FAM55B MS Standard C13 and N15-labeled recombinant protein (NP_872301) with a C-terminal MYC/DDK tag, was expressed in HEK293 cells.
Species	Human
Source	HEK293
Description	NXPE2 (Neurexophilin And PC-Esterase Domain Family Member 2) is a Protein Coding gene. An important paralog of this gene is NXPE4.
Molecular Mass	64.7 kDa
AA Sequence	<p>MVEKILIHRIITLFPNAIARKLLLMLTFILIFWIIYLASKDHTKFSFNLENHIILNQGNIFFK YSHSETPLCPAVSPKETELRIKDIMEKLDQQIPPRPFTHVNTTTSATHSTATILNPQDT YCRGDQLDILLEVRDHLGHRKQYGGDFLRARMYSTALMAGASGKVTFDFNNGTYLV SFTLFWEGQVSLSLLLIHPSEGVSALWRARNQGCRIIFTGLFANRSSNVFTECGLTL NTNAELCQYMDDRDQEAFCVVRPQHMPCEALTHMTTRTRNISYLSKEEWRLFHRS NIGVEMMKNFTPIEVPCNKSENIKKNCQIGMKTFFPSGYTLKMMWITAFCKQIKFNET KNINDCLERKLIYLMGDSTLHQWIYYLQKAVKTLKYFDHHGAGIFKTHVLLDVERHILI QWKKKHGHPFVTKKLFVVDENYIPREIDQVAGDKNTAIVITLGQHFPPINIFIRRAIN IQKAIERLFLRSPETKVILKTENTREIEQNAEMFSDFHGYIQNLIIRDIFVDLNVGIIDAW DMTIAYCTNNAHPPDYVIQIQIGMFLNYICTRTRPLEQKLISEEDLAANDILDYKDDDD KV</p>

 Tel: 1-631-559-9269 1-516-512-3133

 Email: info@creative-biomart.com  Fax: 1-631-938-8127

 45-1 Ramsey Road, Shirley, NY 11967, USA

Purity	> 80% as determined by SDS-PAGE and Coomassie blue staining
Stability	Stable for 3 months from receipt of products under proper storage and handling conditions.
Storage	Store at -80 centigrade. Avoid repeated freeze-thaw cycles.
Concentration	50 µg/mL as determined by BCA
Storage Buffer	100 mM glycine, 25 mM Tris-HCl, pH 7.3.

GENE INFORMATION

Gene Name	NXPE2 neurexophilin and PC-esterase domain family member 2 [Homo sapiens (human)]
Official Symbol	NXPE2
Synonyms	NXPE2; neurexophilin and PC-esterase domain family member 2; FAM55B; NXPE family member 2; family with sequence similarity 55, member B; protein FAM55B
Gene ID	120406
mRNA Refseq	NM_182495
Protein Refseq	NP_872301
UniProt ID	Q96DL1

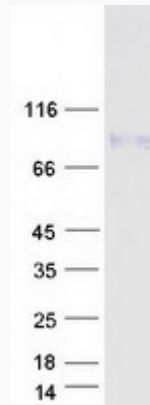
 Tel: 1-631-559-9269 1-516-512-3133

 Email: info@creative-biomart.com  Fax: 1-631-938-8127

 45-1 Ramsey Road, Shirley, NY 11967, USA



SDS-PAGE



☎ Tel: 1-631-559-9269 1-516-512-3133

☎ Email: info@creative-biomart.com ☎ Fax: 1-631-938-8127

☎ 45-1 Ramsey Road, Shirley, NY 11967, USA