

## Recombinant Human NXPH1 Protein (Ala22-Gly271), C-His tagged

Cat. No. NXPH1-4234H Lot. No. (See product label)

### SPECIFICATION

<b>Product Overview</b>	Recombinant human NXPH1 (Ala22-Gly271) fused with the C-terminal His tag was expressed in Mammalian cells.
<b>Species</b>	Human
<b>Source</b>	Mammalian Cells
<b>ProteinLength</b>	Ala22-Gly271
<b>Form</b>	Lyophilized powder/frozen liquid
<b>Molecular Mass</b>	27.5 kDa
<b>Purity</b>	>90% as determined by SDS-PAGE.
<b>Notes</b>	For research use only.
<b>Storage</b>	Use a manual defrost freezer and avoid repeated freeze thaw cycles. Store at 2 to 8 centigrade for one week. Store at -20 to -80 centigrade for twelve months from the date of receipt.
<b>Storage Buffer</b>	Supplied as solution form in PBS or lyophilized from PBS.
<b>Reconstitution</b>	Reconstitute in sterile water for a stock solution.

 Tel: 1-631-559-9269 1-516-512-3133

 Email: [info@creative-biomart.com](mailto:info@creative-biomart.com)  Fax: 1-631-938-8127


 45-1 Ramsey Road, Shirley, NY 11967, USA

**Shipping**

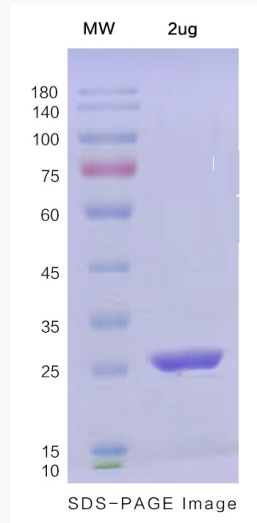
They are shipped out with dry ice/blue ice unless customers require otherwise.

**GENE INFORMATION**

<b>Gene Name</b>	NXPH1 neurexophilin 1 [ Homo sapiens (human) ]
<b>Official Symbol</b>	NXPH1
<b>Synonyms</b>	NXPH1; neurexophilin 1; neurexophilin-1; NPH1; Nbla00697;
<b>Gene ID</b>	30010
<b>mRNA Refseq</b>	NM_152745
<b>Protein Refseq</b>	NP_689958
<b>MIM</b>	604639
<b>UniProt ID</b>	P58417

 Tel: 1-631-559-9269 1-516-512-3133 Email: [info@creative-biomart.com](mailto:info@creative-biomart.com)  Fax: 1-631-938-8127 45-1 Ramsey Road, Shirley, NY 11967, USA

**SDS-PAGE**



 Tel: 1-631-559-9269 1-516-512-3133

 Email: [info@creative-biomart.com](mailto:info@creative-biomart.com)  Fax: 1-631-938-8127

 45-1 Ramsey Road, Shirley, NY 11967, USA