

Recombinant Human NXT1 Protein, Myc/DDK-tagged, C13 and N15-labeled

Cat. No. NXT1-5172H **Lot. No.** (See product label)

SPECIFICATION

Product Overview	NXT1 MS Standard C13 and N15-labeled recombinant protein (NP_037380) with a C-terminal MYC/DDK tag, was expressed in HEK293 cells.
Species	Human
Source	HEK293
Description	The protein encoded by this gene is located in the nuclear envelope. It has protein similarity to nuclear transport factor 2. This protein functions as a nuclear export factor in both RAN (Ras-related nuclear protein)- and CRM1 (required for chromosome region maintenance)-dependent pathways. It is found to stimulate the export of U1 snRNA in RAN- and CRM1-dependent pathways and the export of tRNA and mRNA in a CRM1-independent pathway. The encoded protein heterodimerizes with Tap protein and may regulate the ability of Tap protein to mediate nuclear mRNA export. The use of alternate polyadenylation sites has been found for this gene.
Molecular Mass	15.8 kDa
AA Sequence	MASVDFKTYVDQACRAAEFVNYYTTMDKRRRLLSRLYMGATLVWNGNAVSGQ ESLSEFFEMLPSSSEFQISVVDCQPVHDEATPSQTTVLVVICGSVKFEGNKQRDFNQN FILTAQASPSNTVWKIASDCFRFQDWASTRTRPLEQKLISEEDLAANDILDYKDDDDK V
Purity	> 80% as determined by SDS-PAGE and Coomassie blue staining

 Tel: 1-631-559-9269 1-516-512-3133

 Email: info@creative-biomart.com  Fax: 1-631-938-8127

 45-1 Ramsey Road, Shirley, NY 11967, USA

Stability	Stable for 3 months from receipt of products under proper storage and handling conditions.
Storage	Store at -80 centigrade. Avoid repeated freeze-thaw cycles.
Concentration	50 µg/mL as determined by BCA
Storage Buffer	100 mM glycine, 25 mM Tris-HCl, pH 7.3.

GENE INFORMATION

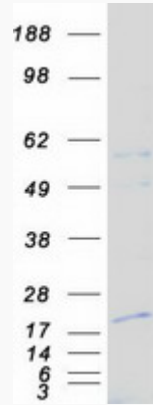
Gene Name	NXT1 NTF2-like export factor 1 [Homo sapiens (human)]
Official Symbol	NXT1
Synonyms	NXT1; NTF2-like export factor 1; NTX2 like export factor1; NTF2-related export protein 1; MTR2; P15; protein p15; NTX2-like export factor1; NUTF-like export factor 1;
Gene ID	29107
mRNA Refseq	NM_013248
Protein Refseq	NP_037380
MIM	605811
UniProt ID	Q9UKK6

 Tel: 1-631-559-9269 1-516-512-3133

 Email: info@creative-biomart.com  Fax: 1-631-938-8127

 45-1 Ramsey Road, Shirley, NY 11967, USA

SDS-PAGE



 Tel: 1-631-559-9269 1-516-512-3133

 Email: info@creative-biomart.com  Fax: 1-631-938-8127

 45-1 Ramsey Road, Shirley, NY 11967, USA