

Recombinant Rat Nicotinamide Nhosporibosyltransferase, FLAG-tagged

Cat. No. Nampt-2167R Lot. No. (See product label)

SPECIFICATION

Product Overview	Recombinant Rat Nicotinamide Nhosporibosyltransferase is produced in <i>HEK 293 cells</i> . Full length rat Nampt (Visfatin/PBEF) (aa 1-491) is fused at the N-terminus to a FLAG-tag.
Species	Rabbit
Source	HEK293
ProteinLength	1-491 a.a.
Description	Phosphoribosyltransferase (NAMPRase or Nampt) also known as pre-B-cell colony-enhancing factor 1 (PBEF1) or visfatin is an enzyme that in humans is encoded by the PBEF1 gene.[1] This protein has also been reported to be a cytokine (PBEF) that promotes B cell maturation and inhibits neutrophil apoptosis.
Concentration	0.35mg/ml.
Purity	≥90% (SDS-PAGE).
Formulation	Liquid. 0.2µm-filtered solution in PBS, 7.2.
Endotoxin Content	<0.1EU/g protein (LAL test).
Storage And Stability	-20°C. For maximum product recovery after thawing, centrifuge the vial before

 Tel: 1-631-559-9269 1-516-512-3133

 Email: info@creative-biomart.com  Fax: 1-631-938-8127

 45-1 Ramsey Road, Shirley, NY 11967, USA

opening the cap. Avoid freeze/thaw cycles. After reconstitution, prepare aliquots and store at -20°C. Working aliquots are stable for up to 3 months when stored at -20°C.

Full Length Full L.

GENE INFORMATION

Gene Name [Nampt nicotinamide phosphoribosyltransferase \[Rattus norvegicus \]](#)

Synonyms Nampt; nicotinamide phosphoribosyltransferase; Pbef; Pbef1; nicotinamide phosphoribosyltransferase; NAmPRTase; pre-B-cell colony enhancing factor 1; pre-B-cell colony-enhancing factor 1 homolog; EC 2.4.2.12

Gene ID [297508](#)

mRNA Refseq [NM_177928](#)

Protein Refseq [NP_808789](#)

UniProt ID [Q80Z29](#)

Chromosome Location 6q16

Pathway Nicotinate and nicotinamide metabolism

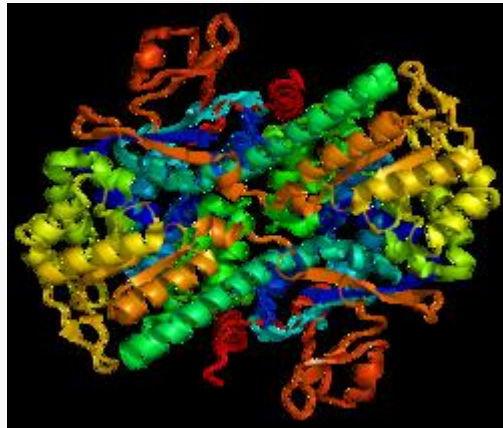
Function cytokine activity; drug binding; nicotinamide phosphoribosyltransferase activity; protein homodimerization activity; transferase activity, transferring glycosyl groups

 Tel: 1-631-559-9269 1-516-512-3133

 Email: info@creative-biomart.com  Fax: 1-631-938-8127

 45-1 Ramsey Road, Shirley, NY 11967, USA

PDB rendering based
on 2g95



 Tel: 1-631-559-9269 1-516-512-3133

 Email: info@creative-biomart.com  Fax: 1-631-938-8127

 45-1 Ramsey Road, Shirley, NY 11967, USA