

Recombinant Mouse Nanog Protein, His tagged

Cat. No. Nanog-14M Lot. No. (See product label)

SPECIFICATION

Product Overview	Recombinant mouse Nanog protein (2-305 aa) with His tag was derived from the transfected human HEK293 cells.
Species	Mouse
Source	HEK293
ProteinLength	2-305 aa
Description	The protein encoded by this gene is a DNA binding homeobox transcription factor involved in embryonic stem (ES) cell proliferation, renewal, and pluripotency. The encoded protein can block ES cell differentiation and can also autorepress its own expression in differentiating cells. Several transcript variants encoding different isoforms have been found for this gene.
Form	Lyophilized powder, Lyophilized from a 0.2 µm filtered solution in PBS (pH 7.4)
Molecular Mass	35 kDa
Purity	> 85%, SDS-PAGE under reducing conditions and visualized by Coomassie blue staining
Storage	Upon arrival, the lyophilized protein may be stored for 2 weeks at 4 centigrade. For long term storage, it is recommended to store desiccated below -20 centigrade in a manual defrost freezer. Following reconstitution, the protein may be stored for 2

 Tel: 1-631-559-9269 1-516-512-3133

 Email: info@creative-biomart.com  Fax: 1-631-938-8127

 45-1 Ramsey Road, Shirley, NY 11967, USA

weeks under sterile conditions at -20 centigrade. For long term storage, it is recommended to make appropriate aliquots and store at -80 centigrade. Avoid repeated freeze-thaw cycles.

Shipping Ambient temperature

Reconstitution Briefly spin the vial and bring the contents to the bottom prior to opening. It is recommended to reconstitute at 0.5 - 1.0 mg/mL with sterile deionized water.

GENE INFORMATION

Gene Name [Nanog Nanog homeobox \[Mus musculus \]](#)

Official Symbol [Nanog](#)

Synonyms NANOG; Nanog homeobox; homeobox protein NANOG; ES cell-associated protein 4; homeobox transcription factor Nanog; early embryo specific expression NK family; early embryo specific expression NK-type homeobox protein; ENK; ecat4; 2410002E02Rik;

Gene ID [71950](#)

mRNA Refseq [NM_028016](#)

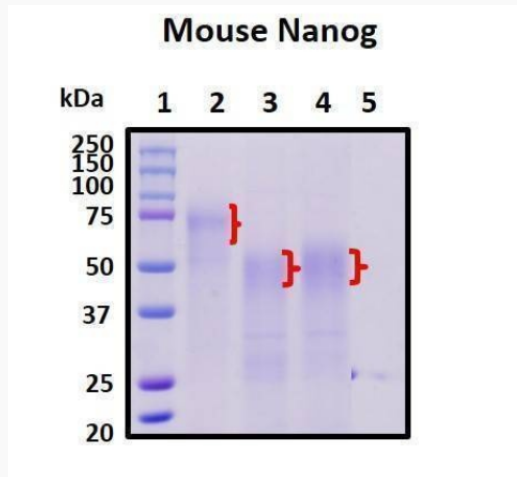
Protein Refseq [NP_082292](#)

 Tel: 1-631-559-9269 1-516-512-3133

 Email: info@creative-biomart.com  Fax: 1-631-938-8127

 45-1 Ramsey Road, Shirley, NY 11967, USA

SDS-PAGE



 Tel: 1-631-559-9269 1-516-512-3133

 Email: info@creative-biomart.com  Fax: 1-631-938-8127

 45-1 Ramsey Road, Shirley, NY 11967, USA