

Recombinant Mouse Napsa protein, His-tagged

Cat. No. Napsa-4643M Lot. No. (See product label)

SPECIFICATION

Product Overview	Recombinant Mouse Napsa protein(O09043)(73-394aa), fused with N-terminal His tag, was expressed in E.coli.
Species	Mouse
Source	E.coli
ProteinLength	73-394aa
Form	If the delivery form is liquid, the default storage buffer is Tris/PBS-based buffer, 5%-50% glycerol. If the delivery form is lyophilized powder, the buffer before lyophilization is Tris/PBS-based buffer, 6% Trehalose, pH 8.0.
Molecular Mass	40.5 kDa
Purity	Greater than 90% as determined by SDS-PAGE.
Storage	Store at -20°C/-80°C upon receipt, aliquoting is necessary for mutiple use. Avoid repeated freeze-thaw cycles.
Reconstitution	We recommend that this vial be briefly centrifuged prior to opening to bring the contents to the bottom. Please reconstitute protein in deionized sterile water to a concentration of 0.1-1.0 mg/mL. We recommend to add 5-50% of glycerol (final concentration) and aliquot for long-term storage at -20°C/-80°C.

 Tel: 1-631-559-9269 1-516-512-3133

 Email: info@creative-biomart.com  Fax: 1-631-938-8127

 45-1 Ramsey Road, Shirley, NY 11967, USA

AA Sequence

YFGTIGLGTTPQNFTVVFDTGSSNLWVPSTRCHFFSLACWFHHRFNPKASSSFRPN
GTKFAIQYGTGRLSGILSQDNLTIGGIHDAFVTFGEALWEPSLIFALAHFDGILGLGFP
TLAVGGVQPPLDAMVEQGLLEKPVFSFYLNDRDSEGSDDGGELVLGGSDPAHYVPPLT
FIPVTIPAYWQVHMESVKVGTGLSLCAQGCSAILDTGTSLITGPSEEIRALNKAIGGYP
FLNGQYFIQCSKTPTLPPVSFHLGGVWFNLTGQDYVIKILQSDVGLCLLGFQALDIPK
PAGPLWILGDVFLGPYVAVFDRGDKNVGPVGLA

GENE INFORMATION

Gene Name [Napsa napsin A aspartic peptidase \[Mus musculus \]](#)

Official Symbol [Napsa](#)

Synonyms NAPSA; napsin A aspartic peptidase; napsin-A; KDAP-1; kidney-derived aspartic protease-like protein; KAP; Kdap; NAP1; SNAPA; pronapsin;

Gene ID [16541](#)

mRNA Refseq [NM_008437](#)

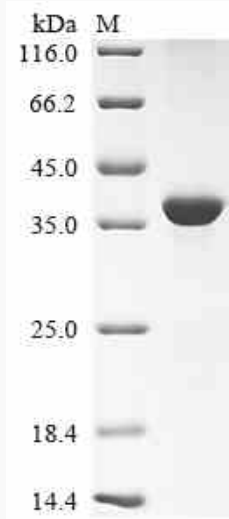
Protein Refseq [NP_032463](#)

 Tel: 1-631-559-9269 1-516-512-3133

 Email: info@creative-biomart.com  Fax: 1-631-938-8127

 45-1 Ramsey Road, Shirley, NY 11967, USA

SDS-PAGE



 Tel: 1-631-559-9269 1-516-512-3133

 Email: info@creative-biomart.com  Fax: 1-631-938-8127

 45-1 Ramsey Road, Shirley, NY 11967, USA