

## Recombinant Rat Nefh protein, His&Myc-tagged

Cat. No. Nefh-7876R Lot. No. (See product label)

### SPECIFICATION

<b>Product Overview</b>	Recombinant Rat Nefh protein(P16884)(91-410aa), fused with N-terminal His tag and C-terminal Myc tag, was expressed in E.coli.
<b>Species</b>	Rat
<b>Source</b>	E.coli
<b>ProteinLength</b>	91-410aa
<b>Form</b>	If the delivery form is liquid, the default storage buffer is Tris/PBS-based buffer, 5%-50% glycerol. If the delivery form is lyophilized powder, the buffer before lyophilization is Tris/PBS-based buffer, 6% Trehalose, pH 8.0.
<b>Molecular Mass</b>	44.2 kDa
<b>Purity</b>	Greater than 85% as determined by SDS-PAGE.
<b>Storage</b>	Store at -20°C/-80°C upon receipt, aliquoting is necessary for mutiple use. Avoid repeated freeze-thaw cycles.
<b>Reconstitution</b>	We recommend that this vial be briefly centrifuged prior to opening to bring the contents to the bottom. Please reconstitute protein in deionized sterile water to a concentration of 0.1-1.0 mg/mL.We recommend to add 5-50% of glycerol (final concentration) and aliquot for long-term storage at -20°C/-80°C.

 Tel: 1-631-559-9269 1-516-512-3133

 Email: [info@creative-biomart.com](mailto:info@creative-biomart.com)  Fax: 1-631-938-8127

 45-1 Ramsey Road, Shirley, NY 11967, USA



**AA Sequence**

ARSEKEQLQALNDRFAGYIDKVRQLEAHNRTLEGEAAALRQQKGRAAMGELYEREV  
REMRGAVLRLGAARGHVRLEQEHLLEDIAHVQRQLDEEARQREEAEAAARALARFA  
QEAEARVELQKKAQALQEECGYLRRHHQEEVGELLGQIQGCGAAQAQAQAEARD  
ALKCDVTSALREIRAQLEGHTVQSTLQSEEWFRVRLDRLSEAAKVNTDAMRSAQEEI  
TEYRRQLQARTTELEALKSTKESLERQRSELEDRHQVDMASYQDAIQQLDNELRNT  
KWEMAAQLREYQDLLNVKMALDIEIAAYRKLLEGEECRIG

**GENE INFORMATION**

**Gene Name** Nefh neurofilament, heavy polypeptide [ Rattus norvegicus ]

**Official Symbol** Nefh

**Synonyms** NEFH; neurofilament, heavy polypeptide; neurofilament heavy polypeptide; NF-H; 200 kDa neurofilament protein; neurofilament triplet H protein; Nfh;

**Gene ID** 24587

**mRNA Refseq** NM\_012607

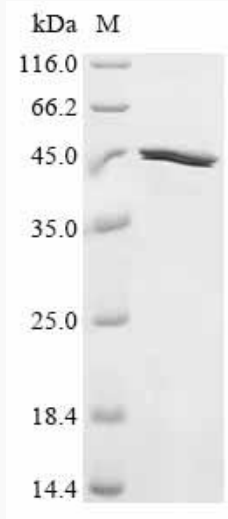
**Protein Refseq** NP\_036739

Tel: 1-631-559-9269 1-516-512-3133

Email: [info@creative-biomart.com](mailto:info@creative-biomart.com) Fax: 1-631-938-8127

45-1 Ramsey Road, Shirley, NY 11967, USA

**SDS-PAGE**



 Tel: 1-631-559-9269 1-516-512-3133

 Email: [info@creative-biomart.com](mailto:info@creative-biomart.com)  Fax: 1-631-938-8127

 45-1 Ramsey Road, Shirley, NY 11967, USA