

## Recombinant Mouse Nefl protein, His-tagged

Cat. No. Nefl-10M Lot. No. (See product label)

### SPECIFICATION

<b>Product Overview</b>	Recombinant Mouse Nefl(Tyr139~Leu234) fused with His tag at N-terminal was expressed in E. coli.
<b>Species</b>	Mouse
<b>Source</b>	E.coli
<b>ProteinLength</b>	Tyr139~Leu234
<b>Description</b>	Nefl antigen played an important role in many functions.
<b>Form</b>	PBS, pH7.4, containing 0.01% SKL, 1mM DTT, 5% Trehalose and Proclin300
<b>Endotoxin</b>	<1.0EU per 1ug (determined by the LAL method)
<b>Purity</b>	> 95%
<b>Applications</b>	SDS-PAGE; WB; ELISA; IP
<b>Quality Control Test</b>	62 kDa
<b>Stability</b>	The thermal stability is described by the loss rate. The loss rate was determined by accelerated thermal degradation test, that is, incubate the protein at 37 centigrade for 48h, and no obvious degradation and precipitation were observed. The loss rate is less than 5% within the expiration date under appropriate storage condition.

 Tel: 1-631-559-9269 1-516-512-3133

 Email: [info@creative-biomart.com](mailto:info@creative-biomart.com)  Fax: 1-631-938-8127

 45-1 Ramsey Road, Shirley, NY 11967, USA

**Storage** Avoid repeated freeze/thaw cycles. Store at 2-8 centigrade for one month. Aliquot and store at -80 centigrade for 12 months.

**Reconstitution** Reconstitute in PBS or others.

## GENE INFORMATION

**Gene Name** Nefl neurofilament, light polypeptide [ *Mus musculus* ]

**Official Symbol** Nefl

**Synonyms** NEFL; neurofilament, light polypeptide; neurofilament light polypeptide; neurofilament protein L; 68 kDa neurofilament protein; neurofilament triplet L protein; Nfl; NF-L; NF68; CMT2E; AI847934;

**Gene ID** 18039

**mRNA Refseq** NM\_010910

**Protein Refseq** NP\_035040

**UniProt ID** P08551

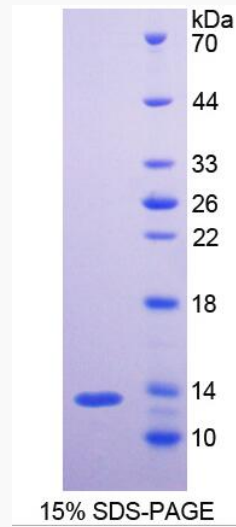
**Pathway** Amyotrophic lateral sclerosis (ALS), organism-specific biosystem; Amyotrophic lateral sclerosis (ALS), conserved biosystem;

**Function** identical protein binding; phospholipase binding; protein C-terminus binding; protein binding; protein domain specific binding; structural constituent of cytoskeleton; structural molecule activity;

 Tel: 1-631-559-9269 1-516-512-3133

 Email: [info@creative-biomart.com](mailto:info@creative-biomart.com)  Fax: 1-631-938-8127

 45-1 Ramsey Road, Shirley, NY 11967, USA



Tel: 1-631-559-9269 1-516-512-3133

Email: [info@creative-biomart.com](mailto:info@creative-biomart.com) Fax: 1-631-938-8127

45-1 Ramsey Road, Shirley, NY 11967, USA