

## Recombinant Mouse Nefl protein, N/A-tagged

Cat. No. Nefl-343M    Lot. No. (See product label)

### SPECIFICATION

|                         |  |
|-------------------------|--|
| <b>Product Overview</b> | Recombinant Mouse Nefl protein(P08551)(2-543aa) was expressed in E.coli.   |
| <b>Species</b>          | Mouse  |
| <b>Source</b>           | E.coli   |
| <b>ProteinLength</b>    | 2-543aa  |
| <b>Form</b>             | If the delivery form is liquid, the default storage buffer is Tris/PBS-based buffer, 5%-50% glycerol. If the delivery form is lyophilized powder, the buffer before lyophilization is Tris/PBS-based buffer, 6% Trehalose, pH 8.0.   |
| <b>Molecular Mass</b>   | 61.5 kDa   |
| <b>Purity</b>           | Greater than 85% as determined by SDS-PAGE.  |
| <b>Storage</b>          | Store at -20°C/-80°C upon receipt, aliquoting is necessary for mutiple use. Avoid repeated freeze-thaw cycles.   |
| <b>Reconstitution</b>   | We recommend that this vial be briefly centrifuged prior to opening to bring the contents to the bottom. Please reconstitute protein in deionized sterile water to a concentration of 0.1-1.0 mg/mL. We recommend to add 5-50% of glycerol (final concentration) and aliquot for long-term storage at -20°C/-80°C. |
| <b>AA Sequence</b>      | SSFGYDPYFSTSYKRRYVETPRVHISSVRSGYSTARSAYSYSAPVSSSLSVRRSYS   |

 Tel: 1-631-559-9269    1-516-512-3133

 Email: [info@creative-biomart.com](mailto:info@creative-biomart.com)     Fax: 1-631-938-8127

 45-1 Ramsey Road, Shirley, NY 11967, USA



SSSGSLMPLENLDLSQVAAISNDLKSIRTQEKAQLQDLNDRFASFIERVHELEQQN  
 KVLEAELLVLRQKHSEPSRFRALYEQEIRDLRLAAEDATNEKQALQGEREGLEETLR  
 NLQARYEEEEVLSREDAEGRLEMEARKGADEAALARAELEKRIDSLMDEIAFLKKVHEE  
 EIAELQAQIQYAQISVEMDVSSKPDLSAALKDIRAQYEKLAAKNMQNAEEWFKSRFT  
 VLTESAAKNTDAVRAAKDEVSESRLLKAKTLEIEACRGMNEALEKQLQELEDKQNA  
 DISAMQDTINKLENELRSTKSEMARYLKEYQDLLNVKMALDIEIAAYRKLLEGEETRL  
 SFTSVGSITSGYSQSSQVFGRSAYSGLQSSSYLMSARSFPAYYTSHVQEEQTEVEE  
 TIEATKAAEAKDEPPSEGEAEKEEKEEKEEKEEKEEKEEKEEKEEKEEKEEKEEKEE  
 EGEEEDTKESKEEKEEKEEKEEKEEKEEKEEKEEKEEKEEKEEKEEKEEKEEKEEKEE  
 EGEEEDTKESKEEKEEKEEKEEKEEKEEKEEKEEKEEKEEKEEKEEKEEKEEKEEKEE

## GENE INFORMATION

**Gene Name** Nefl neurofilament, light polypeptide [ *Mus musculus* ]

**Official Symbol** Nefl

**Synonyms** NEFL; neurofilament, light polypeptide; neurofilament light polypeptide; neurofilament protein L; 68 kDa neurofilament protein; neurofilament triplet L protein; Nfl; NF-L; NF68; CMT2E; AI847934;

**Gene ID** 18039

**mRNA Refseq** NM\_010910

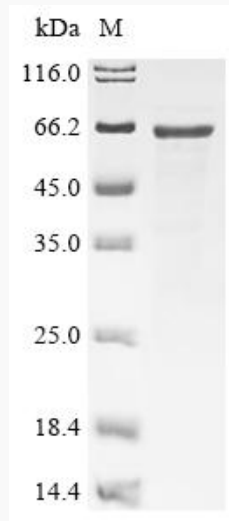
**Protein Refseq** NP\_035040

Tel: 1-631-559-9269 1-516-512-3133

Email: [info@creative-biomart.com](mailto:info@creative-biomart.com) Fax: 1-631-938-8127

45-1 Ramsey Road, Shirley, NY 11967, USA

**SDS-PAGE**



 Tel: 1-631-559-9269 1-516-512-3133

 Email: [info@creative-biomart.com](mailto:info@creative-biomart.com)  Fax: 1-631-938-8127

 45-1 Ramsey Road, Shirley, NY 11967, USA