

## Recombinant Mouse Nefl protein, His-tagged

Cat. No. Nefl-6433M    Lot. No. (See product label)

### SPECIFICATION

<b>Product Overview</b>	Recombinant Mouse Nefl protein(P08551)(2-543aa), fused with N-terminal His tag, was expressed in E.coli.
<b>Species</b>	Mouse
<b>Source</b>	E.coli
<b>ProteinLength</b>	2-543a.a.
<b>Tag</b>	His
<b>Form</b>	If the delivery form is liquid, the default storage buffer is Tris/PBS-based buffer, 5%-50% glycerol. If the delivery form is lyophilized powder, the buffer before lyophilization is Tris/PBS-based buffer, 6% Trehalose, pH 8.0.
<b>Molecular Mass</b>	65.5 kDa
<b>Purity</b>	Greater than 85% as determined by SDS-PAGE.
<b>Storage</b>	Store at -20°C/-80°C upon receipt, aliquoting is necessary for mutiple use. Avoid repeated freeze-thaw cycles.
<b>Reconstitution</b>	We recommend that this vial be briefly centrifuged prior to opening to bring the contents to the bottom. Please reconstitute protein in deionized sterile water to a concentration of 0.1-1.0 mg/mL.We recommend to add 5-50% of glycerol (final

 Tel: 1-631-559-9269    1-516-512-3133

 Email: [info@creative-biomart.com](mailto:info@creative-biomart.com)     Fax: 1-631-938-8127

 45-1 Ramsey Road, Shirley, NY 11967, USA

concentration) and aliquot for long-term storage at -20°C/-80°C.

**AA Sequence**

```

SSFGYDPYFSTSYKRRYVETPRVHISSVRSGYSTARSAYSSYSAPVSSLSVRRSYS
SSSGSLMPLENLDSQVAAISNDLKSIRTQEKAQLQDLNDRFASFIERVHELEQQN
KVLEAELLVLRQKHSEPSRFRALYEQEIRDLRLAAEDATNEKQALQGEREGLEETLR
NLQARYEEEEVLSREDAEGRLMEARKGADEAALARAELEKRIDSLMDEIAFLKKVHEE
EIAELQAQIQYAQISVEMDVSSKPDLSAALKDIRAQYEKLAAKNMQNAEEWFKSRFT
VLTESAAKNTDAVRAAKDEVSESRLLKAKTLEIEACRGMNEALEKQLQELEDKQNA
DISAMQDTINKLENELRSTKSEMARYLKEYQDLLNVKMALDIEIAAYRKLLEGEETRL
SFTSVGSITSGYSQSSQVFGRSAYSGLQSSSYLMSARSFPAYYTSHVQEEQTEVEE
TIEATKAEAAKDEPPSEGEAEKEEKEEKEEGEEEGAEKEEAAKDESEDTKEEEGG
EGEEEDTKESKEEKEEESAGEEQVAKKDD
    
```

## GENE INFORMATION

**Gene Name** Nefl neurofilament, light polypeptide [ *Mus musculus* ]

**Official Symbol** Nefl

**Synonyms** NEFL; neurofilament, light polypeptide; neurofilament light polypeptide; neurofilament protein L; 68 kDa neurofilament protein; neurofilament triplet L protein; Nfl; NF-L; NF68; CMT2E; AI847934;

**Gene ID** 18039

**mRNA Refseq** NM\_010910

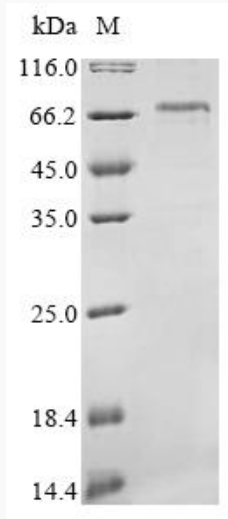
**Protein Refseq** NP\_035040

 Tel: 1-631-559-9269 1-516-512-3133

 Email: [info@creative-biomart.com](mailto:info@creative-biomart.com)  Fax: 1-631-938-8127

 45-1 Ramsey Road, Shirley, NY 11967, USA

**SDS-PAGE**



 Tel: 1-631-559-9269 1-516-512-3133

 Email: [info@creative-biomart.com](mailto:info@creative-biomart.com)  Fax: 1-631-938-8127

 45-1 Ramsey Road, Shirley, NY 11967, USA