

Recombinant Rat Nfe2l2 protein, His & T7-tagged

Cat. No. Nfe2l2-1918R **Lot. No.** (See product label)

SPECIFICATION

Product Overview	Recombinant Rat Nfe2l2 aa. (Ala382~Asn604 (Accession # O54968)) fused with N-terminal His & T7 tag was produced in E. coli cells.
Species	Rat
Source	E.coli
ProteinLength	Ala382~Asn604
Description	A basic leucine zipper transcription factor; involved in activating expression of genes with an antioxidant response element (ARE).
Form	Freeze-dried powder
Molecular Mass	34kDa as determined by SDS-PAGE reducing conditions.
Endotoxin	<1.0EU per 1ug (determined by the LAL method)
Purity	>95%
Applications	SDS-PAGE; WB; ELISA; IP.
Stability	The thermal stability is described by the loss rate. The loss rate was determined by accelerated thermal degradation test, that is, incubate the protein at 37°C for 48h, and no obvious degradation and precipitation were observed. The loss rate is less

 Tel: 1-631-559-9269 1-516-512-3133

 Email: info@creative-biomart.com  Fax: 1-631-938-8127

 45-1 Ramsey Road, Shirley, NY 11967, USA

than 5% within the expiration date under appropriate storage condition.

Storage

Avoid repeated freeze/thaw cycles. Store at 2-8°C for one month. Aliquot and store at -80°C for 12 months.

Storage buffer

Supplied as lyophilized form in PBS, pH7.4, containing 5% trehalose, 0.01% sarcosyl.

Reconstitution

Reconstitute in sterile PBS, pH7.2-pH7.4.

Isoelectric Point

9.4

GENE INFORMATION

Gene Name

[Nfe2l2 nuclear factor, erythroid 2-like 2 \[Rattus norvegicus \(Norway rat\) \]](#)

Official Symbol

[Nfe2l2](#)

Synonyms

Nfe2l2; nuclear factor, erythroid 2-like 2; nuclear factor erythroid 2-related factor 2; NF-E2-related factor 2; NFE2-related factor 2; nrf2; nuclear factor, erythroid derived 2, like 2

Gene ID

[83619](#)

mRNA Refseq

[NM_031789.2](#)

Protein Refseq

[NP_113977.1](#)

UniProt ID

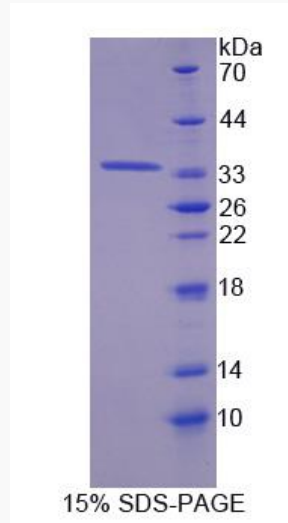
[O54968](#)

 Tel: 1-631-559-9269 1-516-512-3133

 Email: info@creative-biomart.com  Fax: 1-631-938-8127

 45-1 Ramsey Road, Shirley, NY 11967, USA

SDS-PAGE



 Tel: 1-631-559-9269 1-516-512-3133

 Email: info@creative-biomart.com  Fax: 1-631-938-8127

 45-1 Ramsey Road, Shirley, NY 11967, USA