

## Recombinant Active Mouse NGF Protein, His-tagged(C-ter)

Cat. No. Ngf-258M Lot. No. (See product label)

### SPECIFICATION

<b>Product Overview</b>	Recombinant Active Mouse NGF Protein with His tag (C-ter) was expressed in E. coli.
<b>Species</b>	Mouse
<b>Source</b>	E.coli
<b>Description</b>	This gene is a member of the NGF-beta family and encodes a secreted protein which homodimerizes and is incorporated into a larger complex. This protein has nerve growth stimulating activity and the complex is involved in the regulation of growth and the differentiation of sympathetic and certain sensory neurons. Mutations in this gene have been associated with hereditary sensory and autonomic neuropathy, type 5 (HSAN5), and dysregulation of this gene's expression is associated with allergic rhinitis. [provided by RefSeq, Jul 2008]
<b>Form</b>	Powder
<b>Bio-activity</b>	Determined by its ability to induce TF-1 cells proliferation. The ED50 for this effect is < 1 ng/mL. The specific activity of recombinant mouse beta-NGF is > 1 x 10 <sup>6</sup> IU/mg.
<b>AA Sequence</b>	MSSTHPVFHMGFEFSVCDSVSVWVGDKTTATDIKGKEVTVLAEVNINNSVFRQYFFE TKCRASNPVESGCRGIDSKHWNSYCTTTHTFVKALTTDEKQAAWRFFIRIDTACVCVL SRKATRRG
<b>Endotoxin</b>	Endotoxin level is less than 0.1 EU/μg of the protein, as determined by the LAL test.

 Tel: 1-631-559-9269 1-516-512-3133

 Email: [info@creative-biomart.com](mailto:info@creative-biomart.com)  Fax: 1-631-938-8127

 45-1 Ramsey Road, Shirley, NY 11967, USA

<b>Purity</b>	> 98% (by SDS-PAGE)
<b>Applications</b>	SDS-PAGE
<b>Notes</b>	For laboratory research only, not for drug, diagnostic or other use.
<b>Storage</b>	Lyophilized protein should be stored at -20°C. After reconstitution, aliquot and store at -20°C or -80°C for up to one month. Storage in frost free freezers is not recommended. Avoid repeated freeze/thaw cycles. Suggest spin the vial prior to opening.
<b>Storage Buffer</b>	20 mM Sodium citrate (pH 4.5) and 0.2 M NaCl.
<b>Reconstitution</b>	It is recommended to reconstitute the lyophilized protein in sterile water to a concentration not less than 100 µg/mL and incubate the stock solution for at least 20 min at room temperature to make sure the protein is dissolved completely.

## GENE INFORMATION

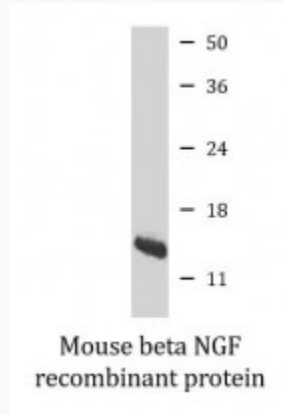
<b>Gene Name</b>	<a href="#">Ngf nerve growth factor [ Mus musculus ]</a>
<b>Official Symbol</b>	<a href="#">Ngf</a>
<b>Synonyms</b>	NGF; nerve growth factor; beta-nerve growth factor; beta-NGF; nerve growth factor, beta; Ngfb;
<b>Gene ID</b>	<a href="#">18049</a>
<b>mRNA Refseq</b>	<a href="#">NM_001112698</a>
<b>Protein Refseq</b>	<a href="#">NP_001106168</a>

 Tel: 1-631-559-9269 1-516-512-3133

 Email: [info@creative-biomart.com](mailto:info@creative-biomart.com)  Fax: 1-631-938-8127

 45-1 Ramsey Road, Shirley, NY 11967, USA

**SDS-PAGE**



 Tel: 1-631-559-9269 1-516-512-3133

 Email: [info@creative-biomart.com](mailto:info@creative-biomart.com)  Fax: 1-631-938-8127

 45-1 Ramsey Road, Shirley, NY 11967, USA