

## Recombinant Mouse Nid2 protein, hFc-tagged

Cat. No. Nid2-533M Lot. No. (See product label)

### SPECIFICATION

<b>Product Overview</b>	Recombinant Mouse Nid2 protein(O88322)(504-865aa), fused with C-terminal hFc tag, was expressed in HEK293.
<b>Species</b>	Mouse
<b>Source</b>	HEK293
<b>ProteinLength</b>	504-865aa
<b>Tag</b>	C-hFc
<b>Form</b>	If the delivery form is liquid, the default storage buffer is Tris/PBS-based buffer, 5%-50% glycerol. If the delivery form is lyophilized powder, the buffer before lyophilization is Tris/PBS-based buffer, 6% Trehalose, pH 8.0.
<b>Molecular Mass</b>	68.5 kDa
<b>Purity</b>	Greater than 90% as determined by SDS-PAGE. Greater than 90% as determined by SEC-HPLC.
<b>Storage</b>	Store at -20°C/-80°C upon receipt, aliquoting is necessary for mutiple use. Avoid repeated freeze-thaw cycles.
<b>Reconstitution</b>	We recommend that this vial be briefly centrifuged prior to opening to bring the contents to the bottom. Please reconstitute protein in deionized sterile water to a

 Tel: 1-631-559-9269 1-516-512-3133

 Email: [info@creative-biomart.com](mailto:info@creative-biomart.com)  Fax: 1-631-938-8127

 45-1 Ramsey Road, Shirley, NY 11967, USA

concentration of 0.1-1.0 mg/mL. We recommend to add 5-50% of glycerol (final concentration) and aliquot for long-term storage at -20°C/-80°C.

**AA Sequence**

NGANLETCEHSHGRCSQHAFCTDYTTGFCCHCQSRFYGNGKHCLPEGAPHRVNG  
 KVSGRLRVGHIPVHFTDVDLHAYIVGNDGRAYTAISHVPQPAQALLPVLPIGGLFG  
 WLFALEKPGSENGFSLTGATFVHDVEVTFHPGEERVITQTAEGLDPENYLSIKTNIE  
 GQVPFIPANFTAHTPYKEFYHYRDSVVTSSSSRSFSLTSGSINQTSYHIDQNITYQ  
 ACRHAPRHLAIPATQQLTVDRAFALYSEDEGVLRFAVTNQIGPVEVDSAPVGVNPCY  
 DGSHTCDTTARCHPGTGVDYTCCTPGFQGDGRSCVDVNECATGFHRCGPNSVC  
 VNLVGSYRCECRSGYEFADDQHTC

## GENE INFORMATION

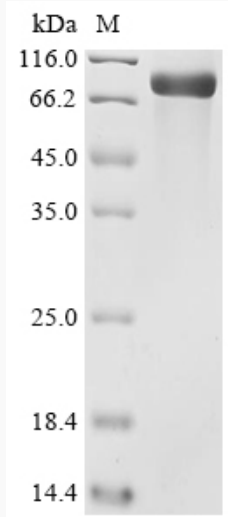
<b>Gene Name</b>	Nid2 nidogen 2 [ <i>Mus musculus</i> ]
<b>Official Symbol</b>	Nid2
<b>Synonyms</b>	NID2; nidogen 2; nidogen-2; entactin 2; Ly111; NID-2; AW547149; entactin-2;
<b>Gene ID</b>	18074
<b>mRNA Refseq</b>	NM_008695
<b>Protein Refseq</b>	NP_032721

 Tel: 1-631-559-9269 1-516-512-3133

 Email: [info@creative-biomart.com](mailto:info@creative-biomart.com)  Fax: 1-631-938-8127

 45-1 Ramsey Road, Shirley, NY 11967, USA

**SDS-PAGE**



 Tel: 1-631-559-9269 1-516-512-3133

 Email: [info@creative-biomart.com](mailto:info@creative-biomart.com)  Fax: 1-631-938-8127

 45-1 Ramsey Road, Shirley, NY 11967, USA