

Recombinant Mouse Nid2 protein, His&Myc-tagged

Cat. No. Nid2-6312M Lot. No. (See product label)

SPECIFICATION

Product Overview	Recombinant Mouse Nid2 protein(O88322)(504-865aa), fused with N-terminal His tag and C-terminal Myc tag, was expressed in E.coli.
Species	Mouse
Source	E.coli
ProteinLength	504-865aa
Form	If the delivery form is liquid, the default storage buffer is Tris/PBS-based buffer, 5%-50% glycerol. If the delivery form is lyophilized powder, the buffer before lyophilization is Tris/PBS-based buffer, 6% Trehalose, pH 8.0.
Molecular Mass	47.0 kDa
Purity	Greater than 85% as determined by SDS-PAGE.
Storage	Store at -20°C/-80°C upon receipt, aliquoting is necessary for mutiple use. Avoid repeated freeze-thaw cycles.
Reconstitution	We recommend that this vial be briefly centrifuged prior to opening to bring the contents to the bottom. Please reconstitute protein in deionized sterile water to a concentration of 0.1-1.0 mg/mL. We recommend to add 5-50% of glycerol (final concentration) and aliquot for long-term storage at -20°C/-80°C.

 Tel: 1-631-559-9269 1-516-512-3133

 Email: info@creative-biomart.com  Fax: 1-631-938-8127

 45-1 Ramsey Road, Shirley, NY 11967, USA



AA Sequence

NGANLETCEHSHGRCSQHAFCTDYTTGFCCHCQSRFYGNGKHCLPEGAPHRVNG
KVSGRLRVGHIPVHFTDVDLHAYIVGNDGRAYTAISHVPQPAQALLPVLPIGGLFG
WLFALKPGSENGFSLTGATFVHDVEVTFHPGEEVRITQTAEGLDPENYLSIKTNIE
GQVPFIPANFTAHTPYKEYFYHYRDSVVTSSSSRSFSLTSGSINQTSYHIDQNITYQ
ACRHAPRHLAIPATQQLTVDRAFALYSEDEGVLRFAVTNQIGPVEVDSAPVGVNPCY
DGSHTCDTTARCHPGTGVDYTCECTPGFQGDGRSCVDVNECATGFHRCGPNSVC
VNLVGSYRCECRSGYEFADDQHTC

GENE INFORMATION

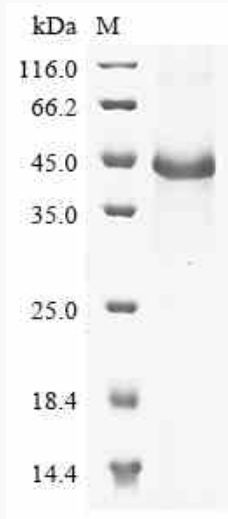
Gene Name	Nid2 nidogen 2 [<i>Mus musculus</i>]
Official Symbol	Nid2
Synonyms	NID2; nidogen 2; nidogen-2; entactin 2; Ly111; NID-2; AW547149; entactin-2;
Gene ID	18074
mRNA Refseq	NM_008695
Protein Refseq	NP_032721

Tel: 1-631-559-9269 1-516-512-3133

Email: info@creative-biomart.com Fax: 1-631-938-8127

45-1 Ramsey Road, Shirley, NY 11967, USA

SDS-PAGE



 Tel: 1-631-559-9269 1-516-512-3133

 Email: info@creative-biomart.com  Fax: 1-631-938-8127

 45-1 Ramsey Road, Shirley, NY 11967, USA