

## Recombinant Mouse Nme1 protein, His-tagged

Cat. No. Nme1-1719M Lot. No. (See product label)

### SPECIFICATION

<b>Product Overview</b>	Recombinant Mouse Nme1 aa. (Arg6~Gln147) fused with N-terminal His tag was produced in E. coli cells.
<b>Species</b>	Mouse
<b>Source</b>	E.coli
<b>ProteinLength</b>	Arg6~Gln147
<b>Form</b>	Freeze-dried powder
<b>Molecular Mass</b>	20kDa as determined by SDS-PAGE reducing conditions.
<b>Endotoxin</b>	<1.0EU per 1ug (determined by the LAL method)
<b>Purity</b>	>92%
<b>Applications</b>	SDS-PAGE; WB; ELISA; IP; CoIP; Purification; Amine Reactive Labeling.
<b>Stability</b>	The thermal stability is described by the loss rate. The loss rate was determined by accelerated thermal degradation test, that is, incubate the protein at 37°C for 48h, and no obvious degradation and precipitation were observed. The loss rate is less than 5% within the expiration date under appropriate storage condition.
<b>Storage</b>	Avoid repeated freeze/thaw cycles. Store at 2-8°C for one month. Aliquot and store at

 Tel: 1-631-559-9269 1-516-512-3133

 Email: [info@creative-biomart.com](mailto:info@creative-biomart.com)  Fax: 1-631-938-8127

 45-1 Ramsey Road, Shirley, NY 11967, USA

-80°C for 12 months.

**Concentration** 200µg/mL

**Storage buffer** 20mM Tris, 150mM NaCl, pH8.0, containing 1mM EDTA, 1mM DTT, 0.01% sarcosyl, 5%Trehalose and Proclin300.

**Reconstitution** Reconstitute in 20mM Tris, 150mM NaCl (pH8.0) to a concentration of 0.1-1.0 mg/mL. Do not vortex.

**Isoelectric Point** 8.9

## GENE INFORMATION

**Gene Name** [Nme1 NME/NM23 nucleoside diphosphate kinase 1 \[ Mus musculus \(house mouse\) \]](#)

**Official Symbol** [Nme1](#)

**Synonyms** Nme1; NME/NM23 nucleoside diphosphate kinase 1; NM23A; NDPK-A; NM23-M1; AL024257; nucleoside diphosphate kinase A; NDK A; NDP kinase A; expressed in non-metastatic cells 1, protein; metastasis inhibition factor NM23; non-metastatic cells 1, protein (NM23A) expressed in; nucleoside-diphosphate kinase 1; nucleotide diphosphate kinase; tumor metastatic process-associated protein

**Gene ID** [18102](#)

**mRNA Refseq** [NM\\_008704.2](#)

**Protein Refseq** [NP\\_032730.1](#)

**UniProt ID** [P15532](#)

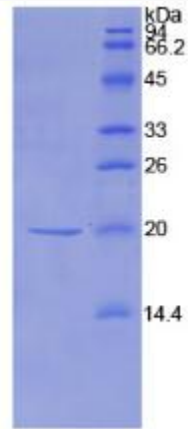
 Tel: 1-631-559-9269 1-516-512-3133

 Email: [info@creative-biomart.com](mailto:info@creative-biomart.com)  Fax: 1-631-938-8127

 45-1 Ramsey Road, Shirley, NY 11967, USA



SDS-PAGE



Tel: 1-631-559-9269 1-516-512-3133

Email: [info@creative-biomart.com](mailto:info@creative-biomart.com) Fax: 1-631-938-8127

45-1 Ramsey Road, Shirley, NY 11967, USA