

Recombinant Mouse Nme5 protein, His & T7-tagged

Cat. No. Nme5-1765M Lot. No. (See product label)

SPECIFICATION

Product Overview	Recombinant Mouse Nme5 aa. (Leu16~Glu210 (Accession # Q99MH5)) fused with N-terminal His & T7 tag was produced in E. coli cells.
Species	Mouse
Source	E.coli
ProteinLength	Leu16~Glu210
Form	Freeze-dried powder
Molecular Mass	Predicted Molecular Mass: 25.9kDa
Endotoxin	<1.0EU per 1ug (determined by the LAL method)
Purity	>95%
Applications	SDS-PAGE; WB; ELISA; IP.
Stability	The thermal stability is described by the loss rate. The loss rate was determined by accelerated thermal degradation test, that is, incubate the protein at 37°C for 48h, and no obvious degradation and precipitation were observed. The loss rate is less than 5% within the expiration date under appropriate storage condition.
Storage	Avoid repeated freeze/thaw cycles. Store at 2-8°C for one month. Aliquot and store at

 Tel: 1-631-559-9269 1-516-512-3133

 Email: info@creative-biomart.com  Fax: 1-631-938-8127

 45-1 Ramsey Road, Shirley, NY 11967, USA

-80°C for 12 months.

Storage buffer Supplied as lyophilized form in PBS, pH7.4, containing 5% trehalose, 0.01% sarcosyl.

Reconstitution Reconstitute in sterile PBS, pH7.2-pH7.4.

Isoelectric Point 5.9

GENE INFORMATION

Gene Name [Nme5 NME/NM23 family member 5 \[Mus musculus \(house mouse\) \]](#)

Official Symbol [Nme5](#)

Synonyms Nme5; NME/NM23 family member 5; Nm23-M5; 1700019D05Rik; nucleoside diphosphate kinase homolog 5; NDK-H 5; NDP kinase homolog 5; expressed in non-metastatic cells 5; non-metastatic cells 5, protein expressed in (nucleoside-diphosphate kinase)

Gene ID [75533](#)

mRNA Refseq [NM_080637.3](#)

Protein Refseq [NP_542368.2](#)

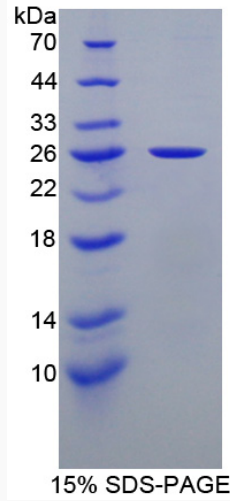
UniProt ID [Q99MH5](#)

 Tel: 1-631-559-9269 1-516-512-3133

 Email: info@creative-biomart.com  Fax: 1-631-938-8127

 45-1 Ramsey Road, Shirley, NY 11967, USA

SDS-PAGE



 Tel: 1-631-559-9269 1-516-512-3133

 Email: info@creative-biomart.com  Fax: 1-631-938-8127

 45-1 Ramsey Road, Shirley, NY 11967, USA