

Recombinant Rat Nme6 protein, His & T7-tagged

Cat. No. Nme6-1458R **Lot. No.** (See product label)

SPECIFICATION

Product Overview	Recombinant Rat Nme6 aa. (Cys13~Ala241 (Accession # O88426)) fused with N-terminal His & T7 tag was produced in E. coli cells.
Species	Rat
Source	E.coli
ProteinLength	Cys13~Ala241
Description	Phosphorylates nucleoside diphosphates; involved in regulation of development, oncogenic transformation, and metastasis.
Form	Freeze-dried powder
Molecular Mass	Predicted Molecular Mass: 29.8kDa
Endotoxin	<1.0EU per 1ug (determined by the LAL method)
Purity	>95%
Applications	SDS-PAGE; WB; ELISA; IP.
Stability	The thermal stability is described by the loss rate. The loss rate was determined by accelerated thermal degradation test, that is, incubate the protein at 37°C for 48h, and no obvious degradation and precipitation were observed. The loss rate is less

 Tel: 1-631-559-9269 1-516-512-3133

 Email: info@creative-biomart.com  Fax: 1-631-938-8127

 45-1 Ramsey Road, Shirley, NY 11967, USA

than 5% within the expiration date under appropriate storage condition.

Storage

Avoid repeated freeze/thaw cycles. Store at 2-8°C for one month. Aliquot and store at -80°C for 12 months.

Storage buffer

Supplied as lyophilized form in PBS, pH7.4, containing 5% sucrose, 0.01% sarcosyl.

Reconstitution

Reconstitute in sterile PBS, pH7.2-pH7.4.

Isoelectric Point

9.8

GENE INFORMATION

Gene Name

[Nme6 NME/NM23 nucleoside diphosphate kinase 6 \[Rattus norvegicus \(Norway rat\) \]](#)

Official Symbol

[Nme6](#)

Synonyms

Nme6; NME/NM23 nucleoside diphosphate kinase 6; Nm23-R6; nucleoside diphosphate kinase 6; NDK 6; NDP kinase 6; expressed in non-metastatic cells 6 (nucleoside-diphosphate kinase); expressed in non-metastatic cells 6, protein (nucleoside diphosphate kinase); non-metastatic cells 6, protein expressed in (nucleoside-diphosphate kinase); nucleoside diphosphate kinase type 6

Gene ID

[58964](#)

mRNA Refseq

[NM_001191884.1](#)

Protein Refseq

[NP_001178813.1](#)

UniProt ID

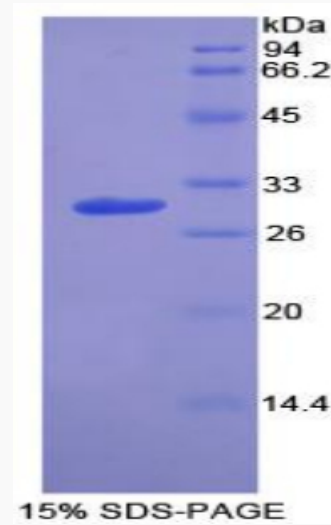
[O88426](#)

 Tel: 1-631-559-9269 1-516-512-3133

 Email: info@creative-biomart.com  Fax: 1-631-938-8127

 45-1 Ramsey Road, Shirley, NY 11967, USA

SDS-PAGE



 Tel: 1-631-559-9269 1-516-512-3133

 Email: info@creative-biomart.com  Fax: 1-631-938-8127

 45-1 Ramsey Road, Shirley, NY 11967, USA