

## Recombinant Rat Notch4 protein, His-tagged

**Cat. No.** Notch4-127R    **Lot. No.** (See product label)

### SPECIFICATION

|                         |   |
|-------------------------|---|
| <b>Product Overview</b> | Recombinant Rat Notch4(Thr1690~Leu1945) fused with His tag at N-terminal was expressed in E. coli.  |
| <b>Species</b>          | Rat   |
| <b>Source</b>           | E.coli  |
| <b>ProteinLength</b>    | Thr1690~Leu1945   |
| <b>Description</b>      | Notch4 played an important role in many functions.  |
| <b>Form</b>             | PBS, pH7.4, containing 0.01% SKL, 1mM DTT, 5% Trehalose and Proclin300  |
| <b>Molecular Mass</b>   | 30.7kDa   |
| <b>Endotoxin</b>        | <1.0EU per 1g (determined by the LAL method)  |
| <b>Purity</b>           | > 95%   |
| <b>Applications</b>     | Positive Control; Immunogen; SDS-PAGE; WB. If bio-activity of the protein is needed, please check active protein.   |
| <b>Stability</b>        | The thermal stability is described by the loss rate. The loss rate was determined by accelerated thermal degradation test, that is, incubate the protein at 37 centigrade for 48h, and no obvious degradation and precipitation were observed. The loss rate is |

 Tel: 1-631-559-9269    1-516-512-3133

 Email: [info@creative-biomart.com](mailto:info@creative-biomart.com)     Fax: 1-631-938-8127

 45-1 Ramsey Road, Shirley, NY 11967, USA

less than 5% within the expiration date under appropriate storage condition.

**Storage**

Avoid repeated freeze/thaw cycles. Store at 2-8 centigrade for one month. Aliquot and store at -80 centigrade for 12 months.

**Reconstitution**

Reconstitute in PBS or others.

## GENE INFORMATION

**Gene Name**

Notch4 notch 4 [ *Rattus norvegicus* ]

**Official Symbol**

Notch4

**Synonyms**

NOTCH4; notch 4; neurogenic locus notch homolog protein 4;

**Gene ID**

406162

**mRNA Refseq**

NM\_001002827

**Protein Refseq**

NP\_001002827

**Chromosome  
Location**

20p12

**Pathway**

Delta-Notch Signaling Pathway, organism-specific biosystem; Dorso-ventral axis formation, organism-specific biosystem; Dorso-ventral axis formation, conserved biosystem; Gene Expression, organism-specific biosystem; Generic Transcription Pathway, organism-specific biosystem; Notch signaling pathway, organism-specific biosystem; Notch signaling pathway, conserved biosystem;

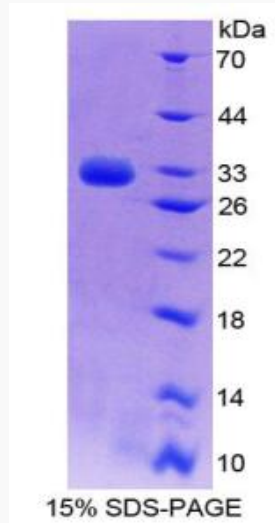
**Function**

calcium ion binding; receptor activity;

 Tel: 1-631-559-9269 1-516-512-3133

 Email: [info@creative-biomart.com](mailto:info@creative-biomart.com)  Fax: 1-631-938-8127

 45-1 Ramsey Road, Shirley, NY 11967, USA



Tel: 1-631-559-9269 1-516-512-3133

Email: [info@creative-biomart.com](mailto:info@creative-biomart.com) Fax: 1-631-938-8127

45-1 Ramsey Road, Shirley, NY 11967, USA