

Recombinant Mouse Notch4 protein, His-tagged

Cat. No. Notch4-1564M Lot. No. (See product label)

SPECIFICATION

Product Overview	Recombinant Mouse Notch4 protein(P31695)(Glu1042-Leu1441), fused with C-terminal His tag, was expressed in HEK293.
Species	Mouse
Source	C-His
ProteinLength	Glu1042-Leu1441
Tag	C-His
Form	Supplied as 0.22µm filtered solution in PB, 500mM NaCl, 10% glycerol (pH 7.0).
Bio-activity	
Molecular Mass	The protein has a predicted MW of 42.91 kDa. Due to glycosylation, the protein migrates to 50-60 kDa based on Tris-Bis PAGE result.
Endotoxin	Less than 1EU per µg by the LAL method.
Purity	> 95% as determined by Tris-Bis PAGE; > 95% as determined by HPLC.
Storage	Valid for 12 months from date of receipt when stored at -80°C.;Recommend to aliquot the protein into smaller quantities for optimal storage. Please do not repeated freeze-thaw cycles.

 Tel: 1-631-559-9269 1-516-512-3133

 Email: info@creative-biomart.com  Fax: 1-631-938-8127

 45-1 Ramsey Road, Shirley, NY 11967, USA

Reconstitution It is recommended that sterile water be added to the vial to prepare a stock solution of 0.2 ug/ul. Centrifuge the vial at 4°C before opening to recover the entire contents.

GENE INFORMATION

Gene Name Notch4 Notch gene homolog 4 (Drosophila) [Mus musculus]

Official Symbol Notch4

Synonyms NOTCH4; Notch gene homolog 4 (Drosophila); neurogenic locus notch homolog protein 4; notch 4; N4; Int3; Int-3;

Gene ID 18132

mRNA Refseq NM_010929

Protein Refseq NP_035059

Tris-Bis PAGE

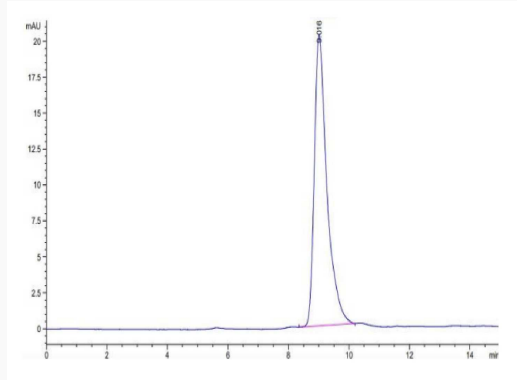


Tel: 1-631-559-9269 1-516-512-3133

Email: info@creative-biomart.com Fax: 1-631-938-8127

45-1 Ramsey Road, Shirley, NY 11967, USA

SEC-HPLC



 Tel: 1-631-559-9269 1-516-512-3133

 Email: info@creative-biomart.com  Fax: 1-631-938-8127

 45-1 Ramsey Road, Shirley, NY 11967, USA