

Recombinant Mouse Nphs1 protein, His-tagged

Cat. No. Nphs1-4595M **Lot. No.** (See product label)

SPECIFICATION

Product Overview	Recombinant Mouse Nphs1 protein(Q9QZS7)(36-250 aa), fused with C-terminal His tag, was expressed in E.coli.
Species	Mouse
Source	E.coli
ProteinLength	36-250 aa
Form	For liquid formulations, the standard storage buffer consists of a Tris or PBS based solution supplemented with 5-50% glycerol. When provided as lyophilized powder, the product undergoes freeze-drying from a Tris- or PBS-based formulation containing 6% trehalose, adjusted to pH 8.0 prior to the lyophilization process.
Molecular Mass	29.6 kDa
AASequence	AQSPVPTSAPRGFWALSENLTVEGSTVKLWCGVRAPGSVVQWAKDGLLLGPNPK IPGFPRYSLEGDSAKGEFHLLIEACDLSDDAEYECQVGRSELGPELVSPSVILSILVSP KVLQLTPEAGSTVTWVAGQEYVVTTCVSGDAKPAPDIIFIQGGRTVEDVSSSVNEGSE EKLFFTEAEARVTPQSSDNGQLLVCEGSNPALATPIKASFTMNI
Purity	Greater than 90% as determined by SDS-PAGE.
Storage	Store at -20°C/-80°C upon receipt, aliquoting is necessary for mutiple use. Avoid repeated freeze-thaw cycles.

 Tel: 1-631-559-9269 1-516-512-3133

 Email: info@creative-biomart.com  Fax: 1-631-938-8127

 45-1 Ramsey Road, Shirley, NY 11967, USA

Reconstitution Please reconstitute protein in deionized sterile water to a concentration of 0.1-1.0 mg/mL. Aliquot for long-term storage at -80°C.

GENE INFORMATION

Gene Name Nphs1 nephrosis 1 homolog, nephrin (human) [*Mus musculus*]

Official Symbol Nphs1

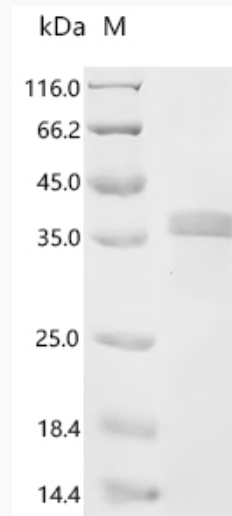
Synonyms NPHS1; nephrosis 1 homolog, nephrin (human); nephrin; nephrin 1; renal glomerulus-specific cell adhesion receptor; NephrinB;

Gene ID 54631

mRNA Refseq NM_019459

Protein Refseq NP_062332

SDS-PAGE



 Tel: 1-631-559-9269 1-516-512-3133

 Email: info@creative-biomart.com  Fax: 1-631-938-8127

 45-1 Ramsey Road, Shirley, NY 11967, USA