

Recombinant Rat Nppa Protein, His-tagged

Cat. No. Nppa-263R Lot. No. (See product label)

SPECIFICATION

| | |
|-------------------------|---|
| Product Overview | Recombinant Rat Nppa(Asn25~Arg122) fused with His tag at N-terminal was expressed in E. coli. |
| Species | Rat |
| Source | E.coli |
| ProteinLength | Asn25~Arg122 |
| Description | Nppa played an important role in many functions. |
| Form | PBS, pH7.4, containing 0.01% SKL, 1mM DTT, 5% Trehalose and Proclin300. |
| Molecular Mass | 12.1kDa |
| Identity | Reconstitute in PBS or others |
| Endotoxin | <1.0EU per 1g (determined by the LAL method) |
| Purity | > 95% |
| Applications | Positive Control; Immunogen; SDS-PAGE; WB. If bio-activity of the protein is needed, please check active protein |
| Stability | The thermal stability is described by the loss rate. The loss rate was determined by |

 Tel: 1-631-559-9269 1-516-512-3133

 Email: info@creative-biomart.com  Fax: 1-631-938-8127

 45-1 Ramsey Road, Shirley, NY 11967, USA

accelerated thermal degradation test, that is, incubate the protein at 37 centigrade for 48h, and no obvious degradation and precipitation were observed. The loss rate is less than 5% within the expiration date under appropriate storage condition.

Storage

Avoid repeated freeze/thaw cycles. Store at 2-8 centigrade for one month. Aliquot and store at -80 centigrade for 12 months.

Reconstitution

Reconstitute in PBS or others

GENE INFORMATION

Gene Name

[Nppa natriuretic peptide A \[Rattus norvegicus \]](#)

Official Symbol

[Nppa](#)

Synonyms

NPPA; natriuretic peptide A; natriuretic peptides A; prepronatriodilatin; atrial natriuretic factor; atrial natriuretic peptide; natriuretic peptide precursor type A; Natriuretic peptide precursor A (pronatriodilatin, also Anf, Pnd); ANF; ANP; Pnd; RATANF;

Gene ID

[24602](#)

mRNA Refseq

[NM_012612](#)

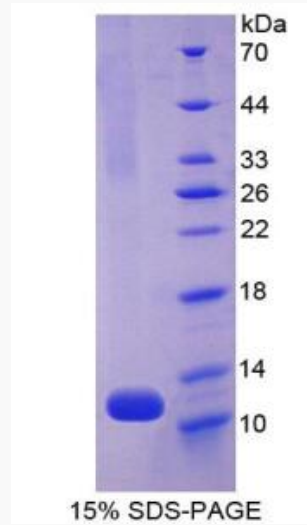
Protein Refseq

[NP_036744](#)

 Tel: 1-631-559-9269 1-516-512-3133

 Email: info@creative-biomart.com  Fax: 1-631-938-8127

 45-1 Ramsey Road, Shirley, NY 11967, USA



Tel: 1-631-559-9269 1-516-512-3133

Email: info@creative-biomart.com Fax: 1-631-938-8127

45-1 Ramsey Road, Shirley, NY 11967, USA