

## Recombinant Rat Nppa Protein, His-tagged

**Cat. No.** Nppa-387R    **Lot. No.** (See product label)

### SPECIFICATION

<b>Product Overview</b>	Recombinant Rat Nppa Protein (Asn25-Arg122) with N-His tag was expressed in E. coli.
<b>Species</b>	Rat
<b>Source</b>	E.coli
<b>ProteinLength</b>	Asn25-Arg122
<b>Description</b>	Enables hormone activity. Involved in several processes, including cGMP biosynthetic process; cellular response to mechanical stimulus; and regulation of ion transport. Acts upstream of or within receptor guanylyl cyclase signaling pathway. Located in several cellular components, including brush border; mast cell granule; and perinuclear region of cytoplasm. Used to study congestive heart failure; pulmonary hypertension; and ureteral obstruction. Biomarker of acute kidney failure; artery disease (multiple); hypertrophic cardiomyopathy; and nephrosis. Human ortholog(s) of this gene implicated in artery disease (multiple); heart conduction disease (multiple); and peritonitis. Orthologous to human NPPA (natriuretic peptide A).
<b>Form</b>	Freeze-dried powder
<b>Molecular Mass</b>	Predicted Molecular Mass: 12.1 kDa
<b>Purity</b>	> 95%

 Tel: 1-631-559-9269    1-516-512-3133

 Email: [info@creative-biomart.com](mailto:info@creative-biomart.com)     Fax: 1-631-938-8127

 45-1 Ramsey Road, Shirley, NY 11967, USA

<b>Applications</b>	Positive Control; Immunogen; SDS-PAGE; WB.
<b>Stability</b>	The thermal stability is described by the loss rate. The loss rate was determined by accelerated thermal degradation test, that is, incubate the protein at 37 centigrade for 48h, and no obvious degradation and precipitation were observed. The loss rate is less than 5% within the expiration date under appropriate storage condition.
<b>Storage</b>	Avoid repeated freeze/thaw cycles. Store at 2-8 centigrade for one month. Aliquot and store at -80 centigrade for 12 months.
<b>Storage Buffer</b>	PBS, pH7.4, containing 0.01% SKL, 1 mM DTT, 5% Trehalose and Proclin300.
<b>Reconstitution</b>	Reconstitute in sterile water to a concentration of 0.1-1.0 mg/mL. Do not vortex.

## GENE INFORMATION

<b>Gene Name</b>	<a href="#">Nppa natriuretic peptide A [ Rattus norvegicus (Norway rat) ]</a>
<b>Official Symbol</b>	<a href="#">Nppa</a>
<b>Synonyms</b>	NPPA; natriuretic peptide A; natriuretic peptides A; prepronatriodilatin; atrial natriuretic factor; atrial natriuretic peptide; natriuretic peptide precursor type A; Natriuretic peptide precursor A (pronatriodilatin, also Anf, Pnd); ANF; ANP; Pnd; RATANF
<b>Gene ID</b>	<a href="#">24602</a>
<b>mRNA Refseq</b>	<a href="#">NM_012612</a>
<b>Protein Refseq</b>	<a href="#">NP_036744</a>

 Tel: 1-631-559-9269 1-516-512-3133

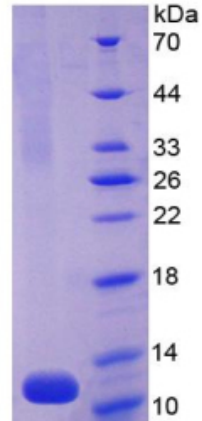
 Email: [info@creative-biomart.com](mailto:info@creative-biomart.com)  Fax: 1-631-938-8127

 45-1 Ramsey Road, Shirley, NY 11967, USA



UniProt ID

P01161



15% SDS-PAGE

Tel: 1-631-559-9269 1-516-512-3133

Email: [info@creative-biomart.com](mailto:info@creative-biomart.com) Fax: 1-631-938-8127

45-1 Ramsey Road, Shirley, NY 11967, USA