

Recombinant Rat Nppb Protein, His-tagged

Cat. No. Nppb-1851R **Lot. No.** (See product label)

SPECIFICATION

Product Overview	Recombinant Rat Nppb Protein (His27-Ser77) with N-His tag was expressed in E. coli.
Species	Rat
Source	E.coli
ProteinLength	His27-Ser77
Description	Enables hormone activity. Involved in several processes, including cellular response to mechanical stimulus; negative regulation of cell population proliferation; and positive regulation of cGMP-mediated signaling. Located in several cellular components, including extracellular space; perinuclear region of cytoplasm; and transport vesicle. Used to study hypertension; hypertensive heart disease; myocardial infarction; polycystic kidney disease; and proteinuria. Biomarker of several diseases, including artery disease (multiple); heart disease (multiple); hyperhomocysteinemia; obesity; and type 2 diabetes mellitus. Human ortholog(s) of this gene implicated in atherosclerosis; hypertension; myocardial infarction; obesity; and systolic heart failure. Orthologous to human NPPB (natriuretic peptide B).
Form	Freeze-dried powder
Molecular Mass	Predicted Molecular Mass: 9.5 kDa Accurate Molecular Mass: 12 kDa

 Tel: 1-631-559-9269 1-516-512-3133

 Email: info@creative-biomart.com  Fax: 1-631-938-8127

 45-1 Ramsey Road, Shirley, NY 11967, USA

Purity	> 95%
Applications	Positive Control; Immunogen; SDS-PAGE; WB.
Stability	The thermal stability is described by the loss rate. The loss rate was determined by accelerated thermal degradation test, that is, incubate the protein at 37 centigrade for 48h, and no obvious degradation and precipitation were observed. The loss rate is less than 5% within the expiration date under appropriate storage condition.
Storage	Avoid repeated freeze/thaw cycles. Store at 2-8 centigrade for one month. Aliquot and store at -80 centigrade for 12 months.
Storage Buffer	20mM Tris, 150mM NaCl, pH8.0, containing 1mM EDTA, 1mM DTT, 0.01% SKL, 5% Trehalose and Proclin300.
Reconstitution	Reconstitute in 20mM Tris, 150mM NaCl (pH8.0) to a concentration of 0.1-1.0 mg/mL. Do not vortex.

GENE INFORMATION

Gene Name	Nppb natriuretic peptide B [Rattus norvegicus (Norway rat)]
Official Symbol	Nppb
Synonyms	Nppb; natriuretic peptide B; BNP; Bnf; natriuretic peptides B; Brain natriuretic factor; brain natriuretic factor prohormone; brain natriuretic peptide; gamma-brain natriuretic peptide; iso-ANP; natriuretic peptide precursor B; natriuretic peptide precursor type B; preproBNP; proBNP
Gene ID	25105

 Tel: 1-631-559-9269 1-516-512-3133

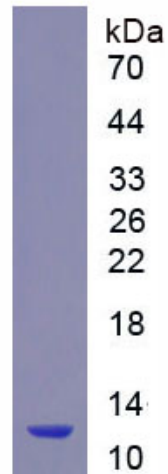
 Email: info@creative-biomart.com  Fax: 1-631-938-8127

 45-1 Ramsey Road, Shirley, NY 11967, USA

mRNA Refseq [NM_031545](#)

Protein Refseq [NP_113733](#)

UniProt ID [P13205](#)



 Tel: 1-631-559-9269 1-516-512-3133

 Email: info@creative-biomart.com  Fax: 1-631-938-8127

 45-1 Ramsey Road, Shirley, NY 11967, USA