

Recombinant Mouse Nppb protein, His & GST-tagged

Cat. No. Nppb-2768M Lot. No. (See product label)

SPECIFICATION

Product Overview	Recombinant Mouse Nppb aa. (Tyr27~Leu121 (Accession # P40753)) fused with N-terminal His & GST tag was produced in E. coli cells.
Species	Mouse
Source	E.coli
ProteinLength	Tyr27~Leu121
Description	This gene encodes a secreted protein that belongs to the family of natriuretic peptides. Its precursor protein is processed to generate the active mature peptide. The mature peptide is a cardiac hormone that plays a role in ventricular remodeling as well as blood pressure regulation. Mice lacking this gene exhibit cardiac fibrosis. In humans this gene is associated with congestive heart failure, low bone-mineral density and postmenopausal osteoporosis. Alternative splicing results in multiple transcript variants encoding different isoforms.
Form	Freeze-dried powder
Molecular Mass	44kDa as determined by SDS-PAGE reducing conditions.
Endotoxin	<1.0EU per 1g (determined by the LAL method)
Purity	>92%

 Tel: 1-631-559-9269 1-516-512-3133

 Email: info@creative-biomart.com  Fax: 1-631-938-8127

 45-1 Ramsey Road, Shirley, NY 11967, USA

Characteristic	The isoelectric point is 8.9.
Applications	SDS-PAGE; WB; ELISA; IP
Stability	The thermal stability is described by the loss rate. The loss rate was determined by accelerated thermal degradation test, that is, incubate the protein at 37°C for 48h, and no obvious degradation and precipitation were observed. The loss rate is less than 5% within the expiration date under appropriate storage condition.
Storage	Avoid repeated freeze/thaw cycles. Store at 2-8°C for one month. Aliquot and store at -80°C for 12 months.
Storage buffer	Supplied as lyophilized form in PBS, pH 7.4, containing 0.01% Sarcosyl, 5% sucrose.
Reconstitution	Reconstitute in sterile PBS, pH7.2-pH7.4.

GENE INFORMATION

Gene Name	Nppb natriuretic peptide type B [Mus musculus (house mouse)]
Official Symbol	Nppb
Synonyms	BNF; BNP; AA408272; brain natriuretic peptide; gamma-brain natriuretic peptide; natriuretic peptide precursor type B; type-B natriuretic factor; natriuretic peptides B
Gene ID	18158
mRNA Refseq	NM_001287348.1
Protein Refseq	NP_001274277.1

 Tel: 1-631-559-9269 1-516-512-3133

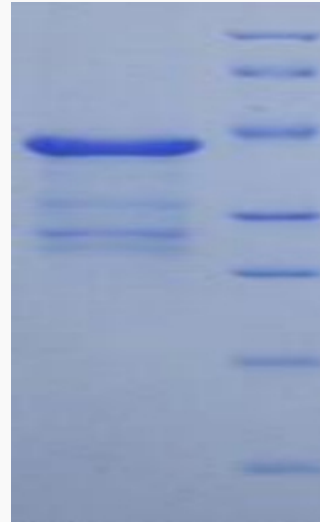
 Email: info@creative-biomart.com  Fax: 1-631-938-8127

 45-1 Ramsey Road, Shirley, NY 11967, USA

UniProt ID

P40753

SDS-PAGE



 Tel: 1-631-559-9269 1-516-512-3133

 Email: info@creative-biomart.com  Fax: 1-631-938-8127

 45-1 Ramsey Road, Shirley, NY 11967, USA