

Recombinant Mouse Nppb Protein, His&SUMO-tagged

Cat. No. Nppb-389M **Lot. No.** (See product label)

SPECIFICATION

Product Overview	Recombinant Mouse Nppb Protein (Ser77-Leu121) with N-His&SUMO tag was expressed in E. coli.
Species	Mouse
Source	E.coli
ProteinLength	Ser77-Leu121
Description	This gene encodes a secreted protein that belongs to the family of natriuretic peptides. Its precursor protein is processed to generate the active mature peptide. The mature peptide is a cardiac hormone that plays a role in ventricular remodeling as well as blood pressure regulation. Mice lacking this gene exhibit cardiac fibrosis. In humans this gene is associated with congestive heart failure, low bone-mineral density and postmenopausal osteoporosis. Alternative splicing results in multiple transcript variants encoding different isoforms.
Form	Freeze-dried powder
Molecular Mass	Predicted Molecular Mass: 18.6 kDa Accurate Molecular Mass: 19 kDa
Purity	> 90%
Applications	Positive Control; Immunogen; SDS-PAGE; WB.

 Tel: 1-631-559-9269 1-516-512-3133

 Email: info@creative-biomart.com  Fax: 1-631-938-8127

 45-1 Ramsey Road, Shirley, NY 11967, USA

Stability	The thermal stability is described by the loss rate. The loss rate was determined by accelerated thermal degradation test, that is, incubate the protein at 37 centigrade for 48h, and no obvious degradation and precipitation were observed. The loss rate is less than 5% within the expiration date under appropriate storage condition.
Storage	Avoid repeated freeze/thaw cycles. Store at 2-8 centigrade for one month. Aliquot and store at -80 centigrade for 12 months.
Storage Buffer	20mM Tris, 150mM NaCl, pH8.0, containing 1mM EDTA, 1mM DTT, 0.01% SKL, 5% Trehalose and Proclin300.
Reconstitution	Reconstitute in sterile water to a concentration of 0.1-1.0 mg/mL. Do not vortex.

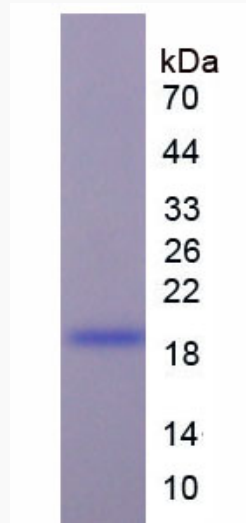
GENE INFORMATION

Gene Name	Nppb natriuretic peptide type B [Mus musculus (house mouse)]
Official Symbol	Nppb
Synonyms	Nppb; natriuretic peptide type B; BNF; BNP; Iso-ANP; AA408272; natriuretic peptides B; brain natriuretic factor prohormone; brain natriuretic peptide; gamma-brain natriuretic peptide; natriuretic peptide precursor type B; preproBNP; proBNP; type-B natriuretic factor
Gene ID	18158
mRNA Refseq	NM_008726
Protein Refseq	NP_032752
UniProt ID	P40753

 Tel: 1-631-559-9269 1-516-512-3133

 Email: info@creative-biomart.com  Fax: 1-631-938-8127

 45-1 Ramsey Road, Shirley, NY 11967, USA



 Tel: 1-631-559-9269 1-516-512-3133

 Email: info@creative-biomart.com  Fax: 1-631-938-8127

 45-1 Ramsey Road, Shirley, NY 11967, USA